

CUSTOM PROGRAMS



Customized program developed for:  
**Washington College**  
Spain  
May 21 - June 2, 2024



 **Generation Study Abroad**  
COMMITMENT PARTNER





**OFFICIAL NAME:** Kingdom of Spain

**CAPITAL:** Madrid

**TOP LANGUAGES:**  
Spanish, Basque, Catalan, Galician

**MAJOR INDUSTRIES:**  
Tourism, automobiles, agriculture, energy, textiles, food and beverages, metals, chemicals



## SPOTLIGHT ON SPAIN

Spain attracts visitors with a passion for life that is contagious. This spirit manifests itself today through the brilliant architecture, the pounding rhythms of flamenco, and the allure of an afternoon siesta. While life hasn't always been easy in Spain, it has emerged from crises both ancient and modern. In the 16th and 17th centuries, the Spanish Empire ruled over broad regions of Europe and the New World, thriving under the rule of the Hapsburgs during a period known as the Golden Age. When this power waned, Spain entered a darker period, mired in turmoil, civil war, and the dictatorship of Francisco Franco. It wasn't until Franco's death in 1975 that Spain truly joined the modern international community.

Spain continues to have positive economic growth following a prolonged recession stemming from the 2008 global financial crisis. Economic activity surpassed its pre-crisis peak in 2017 largely due to increased private consumption. Favorable financial conditions and strong job creation continue to support the private domestic demand, though unemployment remains high. Strong export growth, driven by increasing labor productivity and an internal devaluation, was significant in bringing Spain's current account into surplus and increased interest from foreign investors. The European Commission criticized Spain's 2016 budget for easing austerity measures and for its alleged overly optimistic growth and deficit projections. Recent projections anticipate the economy to grow and the continuation of job creation.

### TOPICS TO EXPLORE

**LITERATURE** – Explore Spain's literary master: walk in the footsteps of Cervantes, Miguel de Unamuno, Federico García Lorca, and even Ernest Hemingway, visiting sites that inspired their characters.

**ART & ARCHITECTURE** – From museums to street murals, the art of Spain is deeply ingrained in culture. Visit works of Goya, Velasquez, and other masters in the Prado. Learn about Picasso's life and work. Wander the sites designed by Antonin Gaudí in Barcelona. Trek through Toledo, Salamanca, or the southern regions where Islamic influence is strong.

**WINE & CUISINE** – Food and wine are central to the Spanish way of life. The Spanish style of small plate or "tapas" is well known, but there is much more to experience and taste at a late dinner in Spain! Taste your way through regions of Spanish cuisine and study the techniques, tools, history, and business of eating and drinking.

### BY THE NUMBERS

1.76 TRILLION | EST 2017  
GDP (USD PPP)

48.9 MILLION | POPULATION

505,370 KM<sup>2</sup> | TOTAL AREA

130 CONNECTIONS

2,300 MEETINGS PLANNED  
IN THE REGION

 **WorldStrides**  
Educational Travel & Experiences

Washington College  
BUS 330 customized itinerary  
**The Commerce of Tourism in Spain**

*The following itinerary is a working document and is subject to change (revised 10/9/2023).*

**May 21, 2024 | Program begins**

**Tuesday**  
Meals included: In-flight dinner.

Flight departs for Barcelona. (Optional — participants may make their own travel arrangements, as long as students are in Barcelona by the morning of May 22, ready to begin the program. For participants who book their own flight, the program cost is reduced by \$1600.)

Departure flight: AA 742 Philadelphia to Barcelona (departure: 7:20 pm, arrival 9 am + 1 day)

**May 22, 2024 | Barcelona**

**Wednesday**  
Meals included:  
Breakfast during flight; group welcome dinner  
Accommodations:  
Atiram Hotel Oriente or similar

Welcome to Barcelona! The personality of this eclectic city is evident in every elegant boulevard and cozy alleyway. The incredible seaside views. The vibrant artwork of Antoni Gaudí. An innovative food scene that is an art in itself. Barcelona is a non-stop inspiration.

At the most common arrival time of all participants, transfer to your accommodations – Participate in a brief **Health and Safety Orientation** before your program begins – Orientation will be enroute to hotel.

Receive your public transportation pass, valid for 4 days for Barcelona (Zones 1-2 unlimited)

Check-in to your accommodations or store luggage if check-in is unavailable.

In the afternoon, enjoy a city tour; public transportation included: **Barcelona Walking Tour**, led by Washington College faculty.

In the evening, taste the local cuisine (tapas) with a group **Welcome Dinner**. Public transportation included.

**May 23, 2024 | Barcelona**

**Thursday**  
Meals included:  
Continental breakfast  
Accommodations:  
Atiram Hotel Oriente or similar

Group travel to today's engagements – public transportation included, no local staff to accompany group.

Business Visit #1: Led by Washington College Faculty.

Break for lunch on own.

Continue to afternoon visits via public transportation.

Sagrada Familia (Self-guided): Visit La Familia Sagrada is a well-known symbol of Barcelona. Take a guided tour of La Sagrada Família and admire the detailed interior and exterior design of this still unfinished church

(entrance included).

Parc Guell (Self-guided): Take a stroll through Parc Guell which was designed primarily by Gaudi and includes a mosaic pagoda (entrance included).

Enjoy the remainder of the day free on own with dinner on own.

### May 24, 2024 | Barcelona

**Friday**

Meals included:  
Continental breakfast

Accommodations:  
Atiram Hotel Oriente  
or similar

Group travel to today's engagements – public transportation included, no local staff to accompany group.

**Business Visit #2:** Led by Washington College Faculty.

Break for lunch on own.

Continue to next visit.

**Business Visit #3:** Led by Washington College Faculty.

Enjoy the remainder of the day free on own with dinner on own.

### May 25, 2024 | Barcelona

**Saturday**

Meals included:  
Continental breakfast;  
cooking class with  
dinner

Accommodations:  
Atiram Hotel Oriente  
or similar

Group travel to today's engagements – public transportation included, no local staff to accompany group in the morning.

**University of Barcelona Tourism Studies Lecture:** Organized by Washington College Faculty.

After lecture, return to the hotel.

Free time for lunch on own.

In the afternoon/evening, meet local staff and depart for cooking class – local staff and public transportation included.

**Cooking Class**

This course delivers all the right ingredients for a memorable experience in Barcelona. Begin your cooking experience and learn how to make tasty tapas and a traditional paella all from scratch. You'll also learn to make your own Sangria, which you can enjoy during the class (lesson fees and dinner included).

Return to accommodations in the evening.

### May 26, 2024 | Barcelona to Palma Mallorca

**Sunday**

Meals included:  
Continental breakfast

Accommodations:  
Hotel Costal Azul  
or similar

Check out of your accommodations and depart for the airport - *Private transportation included, no local staff included.*

**Flight to Palma Mallorca** - *Approximately 55 hour minutes; Quote only*

*Welcome to Mallorca! This postcard-perfect Mediterranean island is known for its beautiful beach resorts and thrilling mountain ranges. From quaint medieval towns to the stunning capital city of Palma, this island region is a joy to discover.*

Upon arrival, make your way to your accommodations – *Local staff and*

*private transportation included.*

Check-in to your accommodations or store luggage if check-in is unavailable.

Break for lunch on own.

Coach for afternoon use to business visits (4 hours) – no local staff included.

**Business Visit # 4:** Led by Washington College faculty.

Enjoy the remainder of the day free on own with dinner on own

## May 27, 2024 | Palma Mallorca

### Monday

Meals included:  
Continental breakfast,  
group lunch

Accommodations:  
Hotel Costal Azul or  
similar

Group travel to today's engagements – Full day local staff and private transportation included.

### **Serra de Tramuntana (Guided)**

The Serra de Tramuntana is a mountain range running southwest–northeast which forms the northern backbone of the Spanish island of Mallorca. It is also the name given to the comarca of the same area. (No applicable entrance fees)

\*Inclusive of stops at Valldemossa (1hr), Na Foradada, Possessio de Mirar, Deia,

Break for group lunch.

**Free Afternoon in Soller:** Enjoy a free afternoon to explore before heading back to the hotel. (No applicable entrance fees).

Enjoy the remainder of the day free on own with dinner on own.

## May 28, 2024 | Palma Mallorca

### Tuesday

Meals included:  
Continental breakfast

Accommodations:  
Hotel Costal Azul or  
similar

Group travel to today's engagements – No local staff. Public transportation included. 1-day public transport ticket included.

### **Palma Walking Tour (Self-guided)**

During your walking tour you will learn more about this Spanish island, visit the cathedral, and hear of its rich history. (Cathedral Entrance Fee included).

Continue to next visit.

**UIB Lecture:** led by Washington College Faculty.

Break for lunch on own.

Continue to next visit.

**Business Visit #5: Melia Hotel Visit:** led by Washington College Faculty.

Enjoy the remainder of the day free on own with dinner on own.

## May 29, 2024 | Palma Mallorca

### Wednesday

Meals included:  
Continental breakfast,

Group travel to today's engagements – Half day private transportation included. No local staff included.

**Student Presentations:** Presentations led by students at Washington



group dinner	College.
Accommodations: Hotel Costal Azul or similar	Break for lunch on own. Continue to next visit. <b>Business Visit #6 Mesquida Mora Winery</b> (led by Washington College Faculty) Group dinner.

### May 30, 2024 | Palma Mallorca

<b>Thursday</b>	Group travel to today's engagements – Full day local staff and private transportation included.
Meals included: Continental breakfast	<b>Business Visit #7: Rafa Nadal International School Visit.</b> Led by Washington College Faculty. Roughly 1-2 hours in duration.
Accommodations: Hotel Costal Azul or similar	Continue to next visit. <b>Drach Caves (Guided)</b> The Caves of Drach are four great caves that are located in the island of Majorca, Balearic Islands, Spain, extending to a depth of 25 m and reaching approximately 4 km in length. They are in the municipality of Manacor, near the locality of Porto Cristo (Entrance included) Entry around 4 pm. *Exact time TBD. Free time in Puerto Cristo for lunch on your own. Return to accommodation. Enjoy the remainder of the day free on own with dinner on own.

### May 31, 2024 | Palma Mallorca to Barcelona

<b>Friday</b>	Check out of your accommodations and depart for the airport – <i>Private transportation included, no local staff included.</i>
Meals included: Continental breakfast, group dinner	<b>Flight to Barcelona</b> - <i>Approximately 55 minutes.</i>
Accommodations: Atiram Hotel Oriente or similar	Upon arrival, make your way to your accommodations – <i>Local staff and private transportation included.</i> Receive 2-day Barcelona Travelcard. Check-in to your accommodations or store luggage if check-in is unavailable. Break for lunch on own In the afternoon, visit Rooq (no local staff, public transportation included) <b>Business Visit #8: Rooq:</b> <i>Sourced by Washington College Faculty.</i> Enjoy dinner as a group at Rooq – <i>arranged by Washington College</i> (no local staff or meal costs included by WorldStrides)

### June 1, 2024 | Barcelona

<b>Saturday</b>	Group travel to today's engagements – public transportation included, no
-----------------	--

Meals included: Continental breakfast	local staff to accompany group Business Visit #9: Led by Washington College Faculty.
Accommodations: Atiram Hotel Oriente or similar	Return to hotel. Enjoy the rest of the afternoon free with lunch and dinner on own.

## June 2, 2024 | Program ends

<b>Sunday</b>	Check out of accommodations; private transportation provided to airport at common time
Meals included: Continental breakfast, in-flight dinner	Flight departs for Barcelona. (Optional — participants may make their own travel arrangements, as long as students are in Barcelona by the morning of May 22, ready to begin the program)  Return flight: AA 743 Barcelona to Philadelphia (departure: 9:40 am, arrival 12:40 pm)

## INTEGRATED RISK MANAGEMENT

Each program is backed by unparalleled risk management and logistical support to deliver true peace of mind. We've spent years building the infrastructure and partnerships to deliver safety and reliability for your traveling groups that exceed your university standards.

### Risk Mitigation

- Comprehensive vendor vetting, including adherence to local laws
- Contingency destinations & re-routing in event of an emergency
- Partnerships with global risk advisory organizations such as WorldAware
- Pre-departure safety orientations conducted for all programs

### Health & Safety While Abroad

- \$500,000 embedded medical insurance including evacuation insurance
- 100% mental wellness coverage with no restrictions on pre-existing conditions
- 24/7 emergency support while traveling:
  - Local emergency team in all our destinations abroad
  - Domestic support to coordinate with your university team back home

## ON THE GROUND

With a growing network of team members around the world, you can rest assured that we're always nearby. Our vetted vendors and trusted ground teams mean you can focus on what really matters – your students. We are passionate about program design, so please rest assured that your proposed itinerary is completely custom and can be modified upon your request.



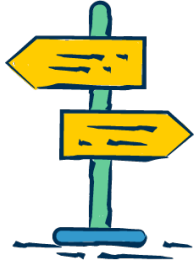
### Transportation

- Coach transportation in safe, clean vehicles with experienced drivers:
  - > As listed within your itinerary, unless otherwise noted as walking or public transit
  - > Airport arrival transfer & airport departure transfer in Barcelona for participants on the group flight
- Barcelona Metro Pass (4-day pass, 2 day pass)
- Intra-program flight from Barcelona to Palma de Mallorca (Return) (quote only—subject to change)



### Support Team

- Local staff to provide an orientation meeting upon arrival
- English-speaking, trained, & professional local tour guides
- Gratuities for guides and drivers
- Tips to waitstaff for all included meals



### Immersion & Extras

- As detailed within your itinerary:
  - > Group meals
  - > Cultural activities & immersions
- One non-alcoholic beverage at all included meals
- All applicable entrance fees for cultural sites, unless otherwise noted

## OPTIONAL ITEMS

- **\$279** per person – Higher Education Travel Protection Plan
- **Single-occupancy room supplement: \$1,474**