

Washington College



Fact Book 2016-2017



Washington College Quick Facts, 2016-17

Enrollments Fall 2016	TOTAL	FULL	PART
Undergraduates			
Matriculated	1446	1437	9
Non-Matriculated	33	21	12
Total Undergraduates	1479	1458	21
Graduate Students	0	0	0
Total Student Headcount	1479	1458	21

Undergraduate International Students	
Matriculated	155
Exchange	14
Total countries represented	31

Undergraduate Ethnicity Status	TOTAL	PCT	FULL	PART
Native-American	9	0.6%	9	0
Asian-American	40	2.8%	40	0
African-American	106	7.3%	105	1
Hispanic-American	68	4.7%	68	0
More than one race	16	1.1%	16	0
Hawaiian-Pacific Islander	1	0.1%	1	0
White	1000	69.2%	995	5
Other /Unknown	53	3.7%	53	0
Non-Resident Alien	153	10.6%	150	3
TOTAL	1446	100%	1437	9
Total Minorities	240	16.6%	239	1

Note: Counts include matriculated undergraduates only.

Degrees Awarded 2015-16	TOTAL
Bachelor of Arts	306
Bachelor of Science	65
Master's	3

Note: Counts do not include double majors.

Washington College Fall 2016 Faculty	TOTAL
Total WC Full-Time Faculty	108
Total WC Part-Time Faculty	74
Tenured / Tenure Track with Terminal Degree	98%

Table of Contents

	Page
I. Introduction	
Quick Facts	i
Table of Contents	ii
Mission Statement	1
Board of Visitors and Governors	2
Senior Staff	3
II. Students	
Washington College Admissions Statistics	4
Minority and International Admissions Statistics	5
Geographic Distribution of Freshman Class	6
Enrollment by Full/Part-Time Students/Class and Gender	7
International Student Population	8
Retention and Graduation Rates for Freshmen Cohorts	9
Degrees Awarded by Major	10
Dean's List/Honors Awarded	11
Varsity Athletic Participation	12
III. Faculty	
Faculty Roster	13
Faculty by Rank, Gender, Tenure Status	14
Five-Year Trend in Faculty Tenure	15
Division Chairs, Academic Department Chairs and Program Directors	16
Faculty Sabbatical and Leave Data	17
Undergraduate Student-Faculty Ratios	18
IV. Finances and Financial Aid	
Revenues and Expenditures	19
V. Facilities	
On and Off-Campus Housing	20
VI. Advancement	
Alumni Annual Giving History	21
VII. College Organization and Governance	
Organizational Charts	22

MISSION STATEMENT

Washington College challenges and inspires emerging citizen leaders to discover lives of purpose and passion.

We share these values of our founding patron, George Washington: integrity, determination, curiosity, civility, leadership, and moral courage. We offer academic rigor and self-discovery in a supportive, residential community of well-qualified, diverse, and motivated individuals. We develop in our students habits of analytic thought and clear communication, aesthetic insight, ethical sensitivity, and civic responsibility.

Unhurried conversation and close connections with an exceptional faculty and staff complement a broad curriculum of study. A beautiful campus, ready access to exciting cities and the Chesapeake Bay, and engagement with cultures and communities locally and around the world afford our students ample resources and opportunities for personal exploration and shared challenges.

We prepare our students for rich and fulfilling lives; for myriad and unpredictable opportunities; for a lifetime of learning, leadership, and productive endeavor.

The enduring values of Washington College – critical thinking, effective communication, and moral courage – move the world.

Washington College
Board of Visitors and Governors
2016-17

Officers

H. Lawrence Culp, Jr. '85, Chairman
Richard L. Creighton '73, Vice Co-Chair
Ann Dorsey Horner '80, Vice Co-Chair

Lynn L. Bergson, P'14, Secretary
Geoffrey M. Rogers, Sr. '80, P'06, Treasurer
Shelia C. Bair, President

Members

Patrick William Allender P'11
Sheila C. Bair
Lynn L. Bergeson, P'14
Norris W. Commodore, Jr. '73
Jayne T. Conroy, P'12, P'15
Richard L. Creighton '73
Thomas C. Crouse, Jr. '59
H. Lawrence Culp, Jr. '85
Regis de Ramel '97
John G. Eckenrode, P'08
Thomas H. Gale
Stephen T. Golding '72 P'05
Richard B. Grieves '83
William J. Harvey, P'10
Ann Dorsey Horner '80
Nina Rodale Houghton P'82, GP'11
Marcia Ann Invernizzi '72
Margaret Goldstein Janney '76

Kirk B. Johnson
Beth Kahn Leaman '73
Jim Lim, '91
Rebecca Corbin Loree, '00
Thomas H. Maddux P'78
William S. Miller, P'14
Edward P. Nordberg '82
Bert W. Rein
Geoffrey M. Rogers, Sr. '80 P'06
Dr. Henry F. Sears
Ralph Snyderman, '61 H'04
Daryl L. Swanstrom '69
John H. Timken '03
Donald C. Tomasso P'98
Deborah Moxley Turner, '77
Peter Van Dyke
Richard D. Wood III '91
Albert J.A. (Jay) Young '81

Emeritus members

Jeannie P. Baliles '62
Margaret R. Bennett
Betty Brown Casey '47 H'86
Libby Anderson Cater Halaby H'90
Barbara T. Cromwell '55
Jack S. Griswold P'94 H'07
Christian Havemeyer
Charles Lewis Lea, Jr.
Craig Lewis P'79 GP'05
Thomas J. Maher P'83 P'85
John A. Moag, Jr. '77

Zung Nguyen '77
W. James Price IV, P'80 H'90
John J. Roberts
William R. Russell, Jr. '53 P'80
B. Francis Saul II H'08
L. Clifford Schroeder P'91, P'94, H'01
Mark A. Schulman '67
Linda J. Spire
W. Jackson Stenger '49
George S. Wills

**Washington College
Senior Staff**

Shelia C. Bair	President
Patrice DiQuinzio	Interim Provost and Dean of the College
Joe Holt	Interim VP for Finance and Administration and Chief of Staff
Daniel Forster	Vice President for Enrollment Management
Sarah Feyerherm	Vice President and Dean of Student Affairs
Andrea Trisciuzzi	Vice President of College Advancement
Rolando Irizarry	Associate Vice President for College Relations and Marketing
Thad Moore	Director of Athletics
Andrea Lange	Interim Associate Provost for Academic Services
Ruth C. Shoge	Dean of Library and Academic Technology
Carolyn Burton	Director of Human Resources
Scott Cowdrey	Chief Information Officer

Washington College Fact Book 2016-17

Washington College Admissions Statistics: Fall 2011 through Fall 2016

		Fall Term					
		2011	2012	2013	2014	2015	2016
FRESHMEN	Applied	4,799	4,484	4,647	5,318	6,847	6,720
	Accepted	2,715	2,976	3,088	2,960	3,702	3,295
	% Accepted	57%	66%	66%	56%	54%	49%
	Enrolled	399	400	349	388	391	410
	% Enrolled	15%	14%	11%	13%	11%	12%
TRANSFER	S Applied	117	112	139	150	140	175
	Accepted	73	72	97	56	87	66
	% Accepted	62%	64%	70%	37%	62%	38%
	Enrolled	43	30	34	31	36	30
	% Enrolled	59%	42%	35%	55%	41%	45%
TOTAL	Total Applied	4,916	4,596	4,786	5,468	6,987	6,895
	Total Accepted	2,788	3,048	3,185	3,016	3,789	3,361
	% Accepted	57%	66%	67%	55%	54%	49%
	Total Enrolled	442	430	383	419	427	440
	% Enrolled	16%	14%	12%	14%	11%	13%

Washington College Freshmen Admissions Profile: Fall 2011 through Fall 2016

Academic and Demographic Characteristics	Fall Term					
	2011	2012	2013	2014	2015	2016
Mean SAT Verbal	592	584	583	583	592	684
Mean SAT Math	579	570	579	579	589	571
Mean SAT Total	1171	1154	1162	1162	1181	1155
Mean High School GPA	3.56	3.48	3.53	3.56	3.65	3.63
Maryland Residents	48%	42%	47%	40%	40%	39%
Out-Of-State Residents	52%	58%	53%	60%	60%	61%
Female	58%	57%	58%	59%	54%	56%
Male	42%	43%	42%	41%	46%	44%

Source: Admissions Office

**Washington College First-time Freshmen
Minority and International Student Statistics**

		Fall Term					
		2011	2012	2013	2014	2015	2016
ASIAN	Applied	249	197	370	350	476	795
	Accepted	112	141	218	260	318	371
	% Accepted	45%	71%	59%	74%	67%	46%
	Enrolled	4	4	8	18	14	34
	% Enrolled	4%	4%	2%	5%	4%	9%
		2011	2012	2013	2014	2015	2016
BLACK	Applied	795	756	782	743	1276	1258
	Accepted	183	251	271	372	600	478
	% Accepted	23%	33%	35%	50%	47%	38%
	Enrolled	15	10	18	23	35	50
	% Enrolled	8%	4%	5%	7%	10%	10%
		2011	2012	2013	2014	2015	2016
HISPANIC	Applied	349	370	417	457	771	926
	Accepted	142	184	226	299	447	417
	% Accepted	41%	50%	54%	65%	58%	45%
	Enrolled	14	23	14	16	21	31
	% Enrolled	10%	13%	4%	5%	6%	7%
		2011	2012	2013	2014	2015	2016
OTHER/ UNKNOWN	Applied	327	392	524	N/A	N/A	991
	Accepted	180	250	311	N/A	N/A	145
	% Accepted	55%	64%	59%	N/A	N/A	15%
	Enrolled	29	31	28	14	14	12
	% Enrolled	16%	12%	8%	4%	4%	8%
		2011	2012	2013	2014	2015	2016
INTERNATIONAL	Applied	140	161	30	40	157	248
	Accepted	70	103	22	N/A	34	131
	% Accepted	50%	64%	73%	N/A	22%	53%
	Enrolled	14	26	22	31	34	22
	% Enrolled	20%	25%	6%	9%	10%	6%
		2011	2012	2013	2014	2015	2016
FIRST-YEAR STUDENT TOT		2011	2012	2013	2014	2015	2016
Minorities		8%	9%	11%	16%	20%	27%
International Citizens		4%	6%	6%	9%	10%	6%

Source: Admissions Office

Geographic Distribution of Freshman Class

	Fall Term					
	2011	2012	2013	2014	2015	2016
Total Freshmen	399	400	349	388	391	410
Region						
Mid-Atlantic						
Maryland	192	166	165	156	157	160
Delaware	28	15	8	29	39	37
New Jersey	52	58	37	36	32	31
New York	19	21	14	17	12	13
Pennsylvania	51	61	47	43	38	47
Washington DC	1	0	1	3	2	1
Total Mid-Atlantic	343	321	272	284	280	289
% of Total	86%	80%	78%	73%	72%	70%
New England						
Connecticut	8	9	10	15	15	8
Massachusetts	6	7	6	9	8	7
Maine	0	0	0	0	0	3
New Hampshire	1	2	0	0	0	3
Rhode Island	3	0	2	0	3	1
Vermont	1	1	1	2	0	2
Total New England	19	19	19	26	26	24
% of Total	5%	5%	5%	7%	7%	6%
South						
Total South	17	22	24	24	22	41
% of Total	4%	6%	7%	6%	6%	10%
West /Southwest						
Total West/Southwest	6	9	9	8	17	19
% of Total	2%	2%	3%	2%	4%	5%
Mid-west						
Total Mid-West	3	4	0	2	6	6
% of Total	1%	1%	0%	1%	2%	1%
U.S. Territories & Foreign Countries						
Total from region	11	25	25	44	40	31
% of Total	3%	6%	7%	11%	10%	8%

Source: Office of Institutional Research

**Matriculated Undergraduates
Enrollment by Full or Part-time Status**

Enrollment Status	Fall Term				
	2012	2013	2014	2015	2016
Full-Time	1444	1410	1396	1380	1437
Percent	99.0%	99.0%	99.1%	99.6%	99.4%
Part-Time	14	14	12	6	9
Percent	1.0%	1.0%	0.9%	0.4%	0.6%
Total Headcount	1458	1424	1408	1386	1446
Full-time Equivalent	1448.7	1414.7	1400.0	1382.0	1440.0

**Matriculated Undergraduates
Enrollment by Class Level and Gender**

	Fall Term				
	2012	2013	2014	2015	2016
Freshmen	418	380	414	413	459
Men	181	166	175	196	218
Women	237	214	239	217	241
Sophomores	375	356	336	378	362
Men	164	163	149	166	151
Women	211	193	187	212	211
Juniors	353	349	317	298	340
Men	134	149	130	126	155
Women	219	200	187	172	185
Seniors	312	339	341	297	285
Men	132	125	144	125	112
Women	180	214	197	172	173
Total Enrollment	1458	1424	1408	1386	1446
Men	611	603	598	613	636
Women	847	821	810	773	810

Note: Counts above exclude students exclusively auditing classes.

Source: Registrar's Office

**Undergraduate International Students at
Washington College by Country**

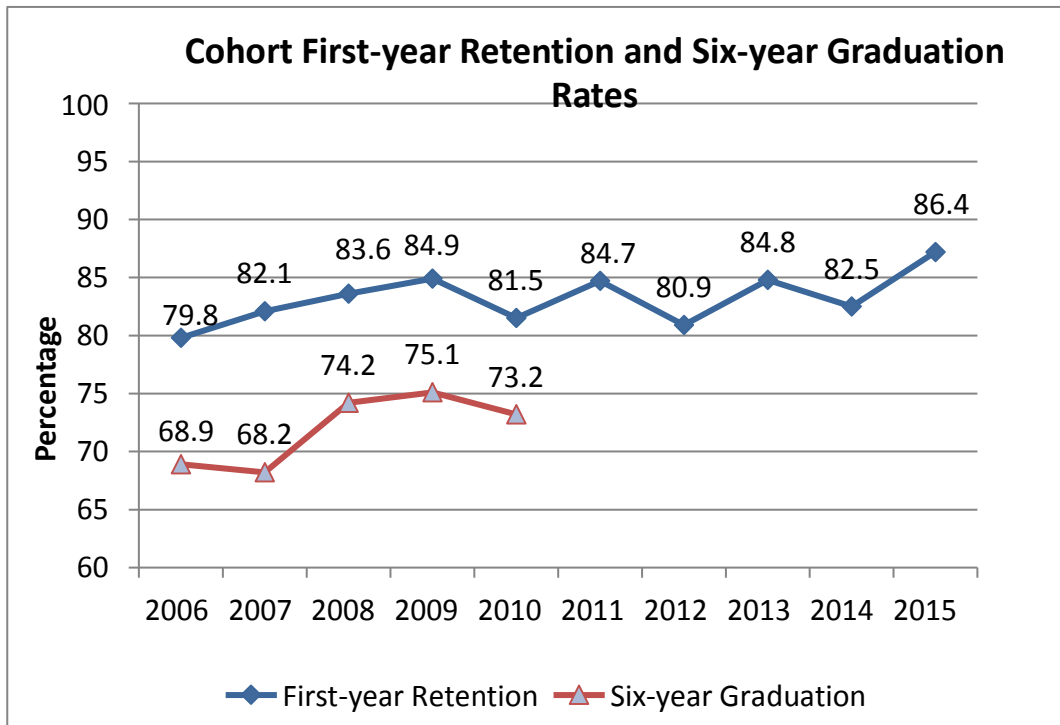
Country	Fall 2016		
	Matriculated (Visa)	Exchange	Total
Argentina	0	2	2
Australia	0	1	1
Bahamas	1	0	1
Bangladesh	1	0	1
Canada	2	0	2
China & Hong Kong	104	1	105
Ecuador	0	1	1
Ethiopia	1	0	1
Finland	0	2	2
France	1	2	3
Germany	1	2	3
India	15	0	15
Indonesia	1	0	1
Italy	1	1	2
Jamaica	1	0	1
Japan	5	1	6
Jordan	4	0	4
Morocco	1	2	3
Nigeria	1	0	1
Norway	1	0	1
Peru	1	0	1
South Korea	4	2	6
Spain	0	1	1
Sweden	1	0	1
Taiwan	2	0	2
Thailand	2	0	2
United Kingdom	3	3	6
Venezelua	1	0	1
Vietnam	3	0	3
Total	158	21	179

Note: Counts include students with Nonresident Alien Status and Visiting Exchange classification.

Source: Office of Institutional Research and Assessment

Retention and Graduation Rates of First-time, Full-time Cohorts

Entering Fall Term	Retention Rates					Graduation Rates				
	1st Fall	2nd Fall	3rd Fall	4th Fall	Enr 5th Sem	within 3 yrs	within 4 yrs	within 5 yrs	within 6 yrs	Total
2006 N % retention	312 100.0%	249 79.8%	223 71.5%	212 68.9%	14 4.5%	3 1.0%	202 64.7%	214 68.6%	215 68.9%	217 69.6%
2007 N % retention	324 100.0%	266 82.1%	233 71.9%	222 69.8%	14 4.3%	4 1.2%	208 64.2%	210 64.8%	221 68.2%	224 69.1%
2008 N % retention	415 100.0%	347 83.6%	315 75.9%	298 73.5%	15 3.6%	7 1.7%	289 69.6%	303 73.0%	308 74.2%	308 74.2%
2009 N % retention	378 100.0%	321 84.9%	292 77.2%	279 75.4%	13 3.4%	6 1.6%	269 71.2%	282 74.6%	284 75.1%	284 75.1%
2010 N % retention	421 100.0%	343 81.5%	313 74.3%	300 73.4%	12 2.9%	9 2.1%	293 69.6%	306 72.7%	308 73.2%	
2011 N % retention	399 100.0%	338 84.7%	313 78.4%	308 77.4%	9 2.3%	1 0.3%	293 73.4%	301 75.4%		
2012 N % retention	397 100.0%	321 80.9%	283 71.3%	269 69.8%	11 2.8%	8 2.0%	252 63.5%			
2013 N % retention	349 100.0%	296 84.8%	269 77.1%	257 74.8%		4 1.1%				
2014 N % retention	388 100.0%	320 82.5%	294 75.8%							
2015 N % retention	391 100.0%	338 86.4%								



Washington College Undergraduate Degrees Awarded by Major ('11-'16)

	2011-12			2012-13			2013-14			2014-15			2015-16		
	Major	Double Major	Total	Major	Double Major	Total	Major	Double Major	Total	Major	Double Major	Total	Major	Double Major	Total
Bachelor of Arts															
American Studies	4	1	5	0	0	0	2	1	3	3	0	3	2	1	3
Anthropology	10	3	13	7	2	9	12	7	19	9	4	13	11	6	17
Art	8	3	11	7	3	10	7	2	9	6	4	10	8	2	10
Business Management	50	5	55	47	2	49	43	1	44	70	5	75	43	7	50
Computer Science	0	1	1	6	1	7	1	0	1	7	0	7	5	6	11
Drama	8	2	10	1	3	4	8	1	9	8	1	9	5	7	12
Economics	19	4	23	29	6	35	14	9	23	19	11	30	20	12	32
English	26	1	27	24	1	25	26	1	27	24	3	27	23	5	28
Environmental Studies	17	0	17	21	2	23	16	1	17	19	4	23	10	1	11
French	1	0	1	1	2	3	1	4	5	2	0	2	1	1	2
German	0	0	0	0	0	0	0	1	1	0	1	1	2	1	3
History	27	3	30	15	1	16	14	2	16	23	1	24	16	1	17
Human Development	13	0	13	10	0	10	21	1	22	9	0	9	8	2	10
Humanities	6	0	6	2	1	3	1	1	2	5	1	6	3	1	4
Intercultural Studies	1	0	1	1	0	1	0	0	0	1	0	1	1	0	1
International Studies	17	2	19	12	1	13	9	2	11	14	1	15	14	2	16
Mathematics	8	1	9	10	5	15	9	1	10	6	7	13	10	1	11
Music	1	1	2	1	2	3	5	2	7	4	1	5	2	1	3
Philosophy	4	3	7	1	1	2	3	4	7	3	6	9	2	0	2
Political Science	11	1	12	13	1	14	24	1	25	18	0	18	19	1	20
Psychology	26	1	27	25	1	26	37	1	38	24	3	27	25	2	27
Sociology	7	0	7	13	3	16	15	1	16	5	2	7	9	3	12
Spanish - Hisp. Studies	2	1	3	1	4	5	3	4	7	1	7	8	3	1	4
Student Designed	1	0	1	0	0	0	0	0	0	0	0	0	0	0	0
B.A. Totals	267	33	300	247	42	289	271	48	319	280	62	342	242	64	306
Bachelor of Science															
Biology	38	0	38	30	1	31	39	0	39	39	1	40	39	1	40
Chemistry	7	2	9	9	1	10	10	1	11	12	2	14	7	1	8
Environmental Science	-	-	-	-	-	-	1	0	1	1	0	1	5	2	7
Physics	6	0	6	4	0	4	3	0	3	7	0	7	2	0	2
Psychology	7	1	8	5	3	8	7	2	9	8	2	10	7	1	8
B.S. Totals	58	3	61	48	5	53	60	3	63	67	5	72	60	5	65
Total B.A. & B.S.	325	36	361	295	47	342	331	51	382	347	67	414	302	69	371

Source: Office of Institutional Research

Academic Honors: Dean's List

	2011-12		2012-13		2013-14		2014-15		2015-16	
	Fall	Spring	Fall	Spring	Fall	Spring	Fall	Spring	Fall	Spring
Freshman Class										
Men	52	37	34	30	32	22	21	15	31	39
Women	90	57	85	58	84	51	60	41	61	75
Sophomore Class										
Men	38	41	37	29	37	31	31	28	28	26
Women	101	102	63	77	85	66	78	71	59	63
Junior Class										
Men	39	35	35	34	49	40	27	32	48	48
Women	66	70	79	95	69	75	78	52	93	93
Senior Class										
Men	50	53	40	53	46	63	54	70	43	41
Women	119	130	85	101	112	124	98	127	99	94
All Undergraduates										
Men	179	166	146	146	164	156	133	145	150	154
Women	376	359	312	331	350	316	314	291	312	325
Total Dean's List	555	525	458	477	514	472	447	436	462	479
All Matriculated Undergraduates	1453	1425	1458	1420	1424	1397	1408	1351	1386	1342
Dean's List as Percent of Total	38%	37%	31%	34%	36%	34%	32%	32%	33%	36%

Note: Dean's List in 2011-12 requires a semester GPA of at least 3.5; three or more courses, and no D's or F's. Earlier GPA cutoff was 3.4. Counts include matriculated undergraduates only.

Academic Honors: Summa, Magna, and Cum Laude and Major Prize

	2012	2013	2014	2015	2016
Summa Cum Laude	14	8	12	23	17
Magna Cum Laude	35	35	29	27	14
Cum Laude	43	41	31	38	31

Year	George Washington Medal
2011	Rachel E. Field
2012	James H. Schelberg
2013	Kathy Thornton
2014	Jeffery D. Sullivan
2015	Madelyn N. Zins
2016	Hjordis Lorenz

Year	Sophie Kerr Prize
2011	Lisa B. Jones
2012	Kathryn J. Manion
2013	Tim Marcin
2014	Alexander C. Stinton
2015	Alexander R. Vidiani
2016	Reilly Cox

Source: Registrar's Office

Washington College Fact Book 2016-17

Varsity Athletic Participation

MEN	2011-12	2012-13	2013-14	2014-15	2015-16
Baseball (1919)	31	33	32	35	37
Basketball (1947)	19	18	14	16	16
Lacrosse (1928)	51	46	50	46	47
Rowing (1974)	32	22	26	32	37
Soccer (1947)	26	29	30	28	26
Swimming (1990)	13	13	16	16	20
Tennis (1947)	12	10	9	9	10
TOTALS	184	171	177	182	193

WOMEN	2011-12	2012-13	2013-14	2014-15	2015-16
Basketball (1993)	11	11	14	13	11
Field Hockey (1984)	20	19	20	24	28
Lacrosse (1981)	22	27	27	24	27
Rowing (1974)	23	21	27	28	27
Soccer (1998)	24	24	17	22	19
Softball (1977)	18	17	20	21	18
Swimming (1985)	18	17	15	20	20
Tennis (1974)	8	7	6	12	11
Volleyball (1976)	14	14	10	14	15
TOTALS	158	157	156	178	176

CO-ED	2011-12	2012-13	2013-14	2014-15	2015-16
Co-ed Sailing (1997)	M 10 W 6	M 9 W 6	M 7 W 5	M 7 W 7	M 6 W 6

Total Participants*	358	344	348	360	369
---------------------	-----	-----	-----	-----	-----

*Note: Students participating in more than one sport are counted more than once.

Source: Washington College Athletic Department

14 FALL 2016 UNDERGRADUATE FACULTY ROSTER

Tenure-Track Faculty						Non-Tenure Track		
Full-time = 95						Full-time= 21/ Part-time= 75		
Full Professor	Tenured	Associate Professor	Tenured	Assistant Professor	Tenured	Full-time	Part-time	Part-time, cont.
Brien, K	Y	Krochmal, A	Y	Beasley, C	N	Assistant Professor	Assistant Professor	Lecturer
Daigle, D	Y	Lampman, A	Y	Campbell, C	N	Ahn, S	Wagner, K	Kesner, L
Deckman, M	Y	Littlefield, L	Y	Carr, J	N	Baylor, C.	VanDerStelt, R	Kibler, M
DeProspo, R	Y	Lobo, A	Y	Case, A	N	<i>Calloway, H</i>	N=2	Kiser, J
Gillin, R	Y	Locker, J	Y	Durso, R	N	Finney, V		Klopcic, P
Hamilton, E	Y	Mayer, A	Y	Eanes, R	N	Foster, S	Lecturer	Kohl, B
Lin, J	Y	Maynard, K	Y	Eckelman, L	N	<i>Khan, N</i>	Alvarez, J	Lange, A
Lynch, R	Y	McCabe, M	Y	Feinberg, G	N	<i>Kramer, A</i>	Anthony, T	Lessard, K
Marteel-Parrish, A	Y	McCollum, J	Y	Fox, B	N	Laux, D	Bauer, J	Levin, D
Moncrief, K	Y	McKillop, K	Y	Fox, R	N	Libina, M	Bishop, R	Livie, K
Pears, P	Y	Meehan, S	Y	Harvey, H	N	Mathewson, P	Boyd, J	Lynn, S
Spilich, G	Y	Miller, K	Y	Hull, D	N	Moreno-Orama, R	Brower, M	Lyons, D
Striner, R	Y	Mooney, R	Y	Leupold, J	N	Neely, A	Buckley, M	Maloney, T
Wilson, C	Y	Oros, A	Y	Lim, K	N	<i>Sade, M</i>	Callahan, J	Markoski, K.
		Prud'homme, J	Y	Lipchock, J	N	Sovich, E	Cerin, J	McCarthy, J
		Ramsey, S	Y	Markin, J (L)	N	Thomas, S	Chatellier, D	McCarty, J
		Reynolds, M	Y	Murphy, T (L)	N	Wan, K	Clark, E	McCollum, K
		Schindler, W	Y	O'Connor, E	N	Williams, L	Clayton, E	McIntire, M
Associate Professor		Schweitzer, K (S)	Y	Ponti, M.	N	N=17	Coppage, M	McMaster, E
Amick, A	Y	Scott, B	Y	Poulsen, D	N	Teaching Fellows	Counihan, E	Migdal, S
Anderson, E	Y	<i>Seidel, J</i>	Y	Putnam Rakin, C	N	Carter, D	DeArmond, D	Moffett, A
Benson, J	Y	Shad, T	Y	Rydel, C	N	N=1	DiQuinzio, P	Newlin, V
Black, T	Y	Sherman, L	Y	Schwartz, N	N		Dixon, R	O'Connor, K
Bunten, B	Y	<i>Shoge, R</i>	Y	Sommerfeld, A	N	Instructor	Drischler, A	Palmer, B
Casado Presa, C	Y	Sorrentino, J	Y	Thuecks, D	N	Ashmore, C	Ellison, W	Palmer, M
Connaughton, M	Y	Tsai, H	Y	Van Meter, R	N	N=1	Ensor, A	Park, W
Daniels, L	Y	Tsui, A	Y	Wills, J	N		Ferguson, G	Rester, J
Deanda-Camacho, E(L)	Y	Verville, K	Y	Wilson, K	N	Lecturer	Fry, A	Richard, C
Ford, R	Y	Volansky, M	Y	Windelborn, J	N	Fithian, C	Gimpel, M	Schultz, H
Gibson, C	Y	Vowels, S	Y	Yost, E	N	Moyer-Taylor, B	Gloyd, T	Shomper, D
Grewling, N	Y	Wade, C	Y			N=2	Goldberg, K	Smith, A
<i>Hall, J</i>	N	Weigel, P	Y				Goodheart, A	Sommerfeld, P
Harvey, M	Y						Green, J	Stahl, L
Helms, A	Y						Hardesty, M	Thomas, J
Kehm, K	Y						Hepler, J	Thornton, K
Kelty, R(L)	Y						Hughes, K	Thuecks, S
Kerchner, M	Y						Jenkins, J	Weibell, N
Knight, A	Y						Johnson, L	Wharton, K
							Kerr, C	Winter, C
							Kesey, R	Wortman, J
% Tenured (Full): 14/14=100%		% Tenured (Assoc): 50/51=98%		% Tenured (Asst): 0/30=0%				

Key: (S) Sabbatical (L) Leave

Source: Office of the Provost and Dean of the College and Human Resources

Fall 2016 - Full-time Faculty Breakdown

1. Full-time Faculty by Rank and Gender

	Female	Male	Total
Full Professors	5	9	14
Associate Professors	21	27	48
Assistant Professors	14	16	30
Non-Tenure Track	10	6	16
TOTAL	50	58	108

2. Full-time Faculty by Rank, Race, and Gender

	Asian		Black		Hispanic		White		Other/Unknown	
	F	M	F	M	F	M	F	M	F	M
Full Professors		1					5	8		
Associate Professors	2	2	2				16	25	1	
Assistant Professors		1					14	14		1
Non-Tenure Track	2						7	6	1	
TOTAL	4	4	2	0	0	0	42	53	2	1

98% HAVE TERMINAL DEGREES

Source: Office of the Provost and Dean of the College

Six-Year Trend in Faculty Tenure (Fall 2011-2016)

Fall	Tenured (N)	Tenure Track (N)	Tenured and Tenure Track (N)	FTE Faculty (N)	Tenured/FTE Percentage
2011	62	29	91	119	52.0%
2012	63	30	93	122	51.8%
2013	63	31	94	126	49.9%
2014	64	31	95	129	49.7%
2015	64	31	95	124	51.8%
2016	64	31	95	133	48.0%

Notes: Table includes all tenure track faculty from roster. Beginning in Fall 2005, the AAUP definition of full-time instructional faculty is used to calculate FTE faculty. Part-time FTE is calculated according to the Common Data Set, where administrators such as the President, Provost, and librarians may be included if they teach one or more credit courses.

Source: Office of the Provost and Dean of the College

2016-17 Division Chairs

Chair, Social Sciences	---	Rachel Durso
Chair, Natural Sci. & Mathematics	---	Kate Verville
Chair, Humanities	---	Nicole Grewling

Academic Department Chairs and Program Directors

American Studies	---	Kenneth Miller, Director
Anthropology	---	William Schindler, Chair
Art and Art History	---	Aileen Tsui, Chair
Biology	---	Martin Connaughton & Mindy Reynolds,
Black Studies	---	Elena Deanda, Director Carol Wilson, FA16
Business Management	---	Susan Vowels, Chair
Center for Teaching and Learning	---	George Spilich, Director
Chemistry	---	Aaron Amick, Chair
Dance	---	Michele Volansky, Director
Earth and Planetary Sciences	---	Karl Kehm, Director
Economics	---	Andrew Helms, Chair
Education	---	Bridget Bunten, Chair
English	---	Kathryn Moncrief, Chair
Environmental Science and	---	Brian Scott & Leslie Sherman, Co-Chairs
Gender Studies	---	Cristina Casado Presa, Director
Global Perspectives (GRW)	---	Aaron Lampman, Director
History	---	Janet Sorrentino, Chair
Humanities	---	Nicole Grewling, Director
Information Systems	---	Austin Lobo & Susan Vowels, Co-Directors
International Studies	---	Andrew Oros, Director
Justice, Law and Society	---	Matthew McCabe, Director
Mathematics and Computer	---	Austin Lobo, Chair
Modern Languages	---	Pamela Pears, Chair & Cristina Casado
Music	---	Jonathan McCollum & John Leupold, Ken Schweitzer & Jonathan McCollum,
Philosophy & Religion	---	Matthew McCabe, Chair
Physical Education	---	Jonathan Jenkins., Chair
Physics	---	Karl Kehm, Chair
Political Science	---	Melissa Deckman, Chair
Psychology	---	Cynthia Gibson, Chair, Kevin McKillop,
Sociology	---	Erin Anderson, Acting Chair
Theatre	---	Michele Volansky, Chair
Writing Program	---	Sean Meehan, Director

Faculty Sabbatical and Leave Data: 2012-13 through 2016-17

Spring 2012

Erin Anderson (L)
Lisa Daniels (L)
Andrew Helms (Jr. Leave)
Aaron Krochmal (Jr. Leave)
James Martin (S)
Tahir Shad (S)
Carol Wilson (S)

Fall 2012

Bridget Bunten (L)
Elena Casado Presa (L)
Cristina Deanda Camacho (JL)
Melissa Deckman (L)
Michael Kerchner (S)
Robert Lynch (S)
Corey Olsen (L)
Leslie Sherman (S)

Spring 2013

Aaron Amick (JL)
Kevin Brien (S)
Melissa Deckman (S)
Karl Kehm (S)
Adalbert Mayer (JL)
Jonathan McCollum (JL)
Mindy Reynolds (L)
Janet Sorrentino (S)
George Spilich (S)

Fall 2013

Nicole Grewling (JL)
Sean Meehan (S)
Tia Panfile-Murphy (PL)
Pamela Pears (S)
Susan Vowels (S)

Spring 2014

Benjamin Bellas (2/3 PL)
Somasree Dasgupta (L)
Rich De Prospro (S)
Ryan Kelty (S)
James Martin (PL)
Kitty Maynard (S)
Donald McColl (PL)
Kevin McKillop (S)
Kate Moncrief (AL)
Andrew Oros (S)
Jennifer Rowsell (PL)
Hui-Ju Tsau (JL)
Peter Weigel (S)

Fall 2014

Benjamin Bellas (JL)
Bridgit Bunten (JL)
Elena Deanda (JL)
Jennifer Hopper (JL)
Robert Lynch (L)
Adi Mayer (PL)
Robert Mooney (S)
Aileen Tsui (S)
Christine Wade (S)

Spring 2015

Aaron Amick (PL)
Bridgit Bunten (JL)
Richard Gillin (S)
Heather Harvey (JL)
Robert Lynch (L)
Tia Murphy (JL)
Jennifer Roswell (JL)
Aileen Tsui (S)

Fall 2015

Bridget Bunten (PL)
James Lipchock (JL)
William Schindler (L)
Richard Striner (Med L)
Lisa Daniels (Med L)
Matt McCabe (S)

Spring 2016

James Hall (JL)
Clayton Black (S)
Michelle Volansky (S)

Fall 2016

Julie Markin (JL)
Tia Murphy (PL)
Elena Deanda (PL)
Ryan Kelty (L)
Ken Schweitzer (S)

Spring 2017

Jennifer Carr (JL)
Laura Eckelman (JL)
Cindy Gibson (S)
Richard Gillian (L)
Ryan Kelty (L)
Aaron Lampan (S)
John Leupold (JL)
Anne Marteel-Parrish (S)
Elizabeth O'Connor (JL)
Courtney Rydel (JL)

Fall 2017

Michael Harvey (S)
Keith Brien (L)
Ryan Kelty (L)
Alisha Knight (S)
Aaron Krochmal (S)
Lauren Littlefield (S)
William Schindler (S)

Student-Faculty Ratios
Fall 2011 through Fall 2016

	Fall 2012	Fall 2013	Fall 2014	Fall 2015	Fall 2016
Full-time Students	1469	1440	1417	1400	1458
Part-time FTE	14.3	14.3	22.7	9.0	7.0
Total FTE Students	1483	1454	1440	1409	1465
	Fall 2012	Fall 2013	Fall 2014	Fall 2015	Fall 2016
FTE Part-time Faculty	26.7	27.3	25.0	23.7	24.7
Full-time Faculty	95	99	97	100	108
Total FTE Faculty	121.7	126.3	122.0	123.7	132.7
Full-time as % of total FTE	78.1%	78.4%	79.5%	80.9%	81.0%
	Fall 2012	Fall 2013	Fall 2014	Fall 2015	Fall 2016
Total FTE Students	1483.3	1454.3	1439.7	1409.0	1465.0
Total FTE Faculty	121.7	126.3	122.0	123.7	132.7
Student/Faculty Ratio	12.2	11.5	11.8	11.4	11.0

Note: Student figures include degree and non-degree seeking undergraduate students. The AAUP definition of full-time instructional faculty is used to calculate FTE faculty. Part-time FTE is calculated according to the Common Data Set where administrators such as the President, Provost, and librarians may be included if they teach one or more credit courses.

**Revenues and Expenses
Fiscal Year 2013 to 2016**

Revenues	Fiscal Year 2013	Fiscal Year 2014	Fiscal Year 2015	Fiscal Year 2016
Tuition & Fees	34,241,135	33,259,231	34,471,457	35,039,677
State Grants	1,432,308	1,540,949	1,510,054	1,564,156
Federal Grants	118,198	104,867	113,042	119,481
Private Gifts	1,601,262	1,638,122	2,240,526	1,704,928
Endowment Income	713,661	709,727	736,459	773,660
Room & Board	11,276,020	11,656,656	12,100,435	12,633,205
Other Auxiliary	2,992,074	2,839,844	3,035,598	3,006,551
Other Income	904,334	1,030,856	1,268,479	1,601,571
Realized/Unrealized Gains & Losses	5,289,126	1,450,453	(89,463)	(470,495)
Net Assets Released from Restriction	14,878,115	12,317,024	15,145,588	13,316,333
Total Revenue	73,446,233	66,547,729	70,532,175	69,289,067

Expenses	Fiscal Year 2013	Fiscal Year 2014	Fiscal Year 2015	Fiscal Year 2016
Instruction	21,285,027	21,013,988	22,104,366	20,922,189
Academic Support	3,498,304	3,757,316	3,213,359	4,388,992
Student Services	10,178,725	10,728,800	11,913,539	12,467,894
Institutional Support	16,734,296	16,354,427	17,650,058	17,525,825
Auxiliary Enterprises	11,397,228	11,457,791	11,319,338	11,308,833
Other Expenses	827,363	576,474	1,746,518	4,349,782
Total Expenses	63,920,943	63,888,796	67,947,178	70,963,515

Change in Net Assets	9,525,290	2,658,933	2,584,997	(1,674,448)
----------------------	-----------	-----------	-----------	-------------

Net Assets at Beginning of Year	91,517,612	101,042,902	103,701,835	106,286,832
Net Assets at End of Year	101,042,902	103,701,835	106,286,832	104,612,384

agrees to f/s - PLHF

Source: Business Office

**On and Off-Campus Housing
Fall 2009 to Fall 2016**

Fall Term	Undergraduates*	On-Campus Residence	Off-Campus Residence	Percent on Campus
2009	1285	1076	209	84%
2010	1378	1165	213	85%
2011	1473	1269	204	86%
2012	1469	1247	222	85%
2013	1440	1204	236	84%
2014	1417	1189	228	84%
2015	1400	1212	188	87%
2016	1458	1262	196	87%

* Matriculated and non-matriculated.

ALUMNI ANNUAL GIVING
2009-10 through 2015-16

Year	Solicitable Base¹	Number of Donors to all funds²	%	Amount³ (\$)	Average Gift⁴ (\$)
2009-10	8,179	1,470	18%	1,296,911	882.25
2010-11 ⁵	8,267	1,597	19%	1,016,076	636.24
2011-12	8,409	1,509	18%	1,222,028	809.83
2012-13	8,555	1,479	17%	1,061,783	717.91
2013-14	8,672	1,445	17%	1,061,791	734.80
2014-15	8,907	1,509	17%	8,376,566	5,551.07
2015-16	9,335	2,004	21%	2,861,439	1,427.86

¹ Solicitable base is defined as undergraduate alumni who have a good address and are not coded "do not solicit".

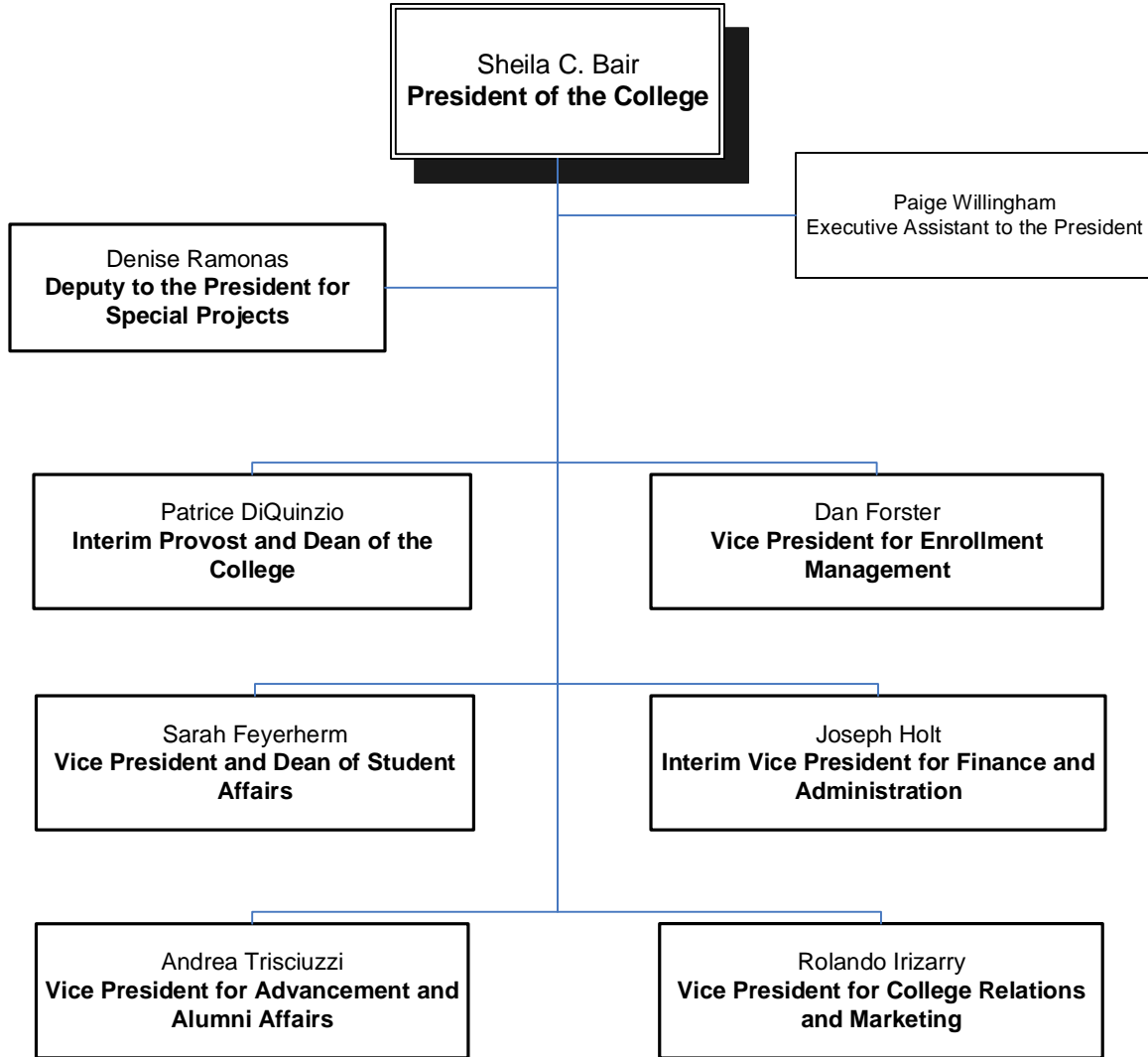
² Using the "Alumni/Undergrad Degree:Donors#" variable as reported to the Voluntary Support of Education Survey (VSE).

³ Using the "Alumni: Total (Using Face Value)" variable as reported to the Voluntary Support of Education Survey (VSE).

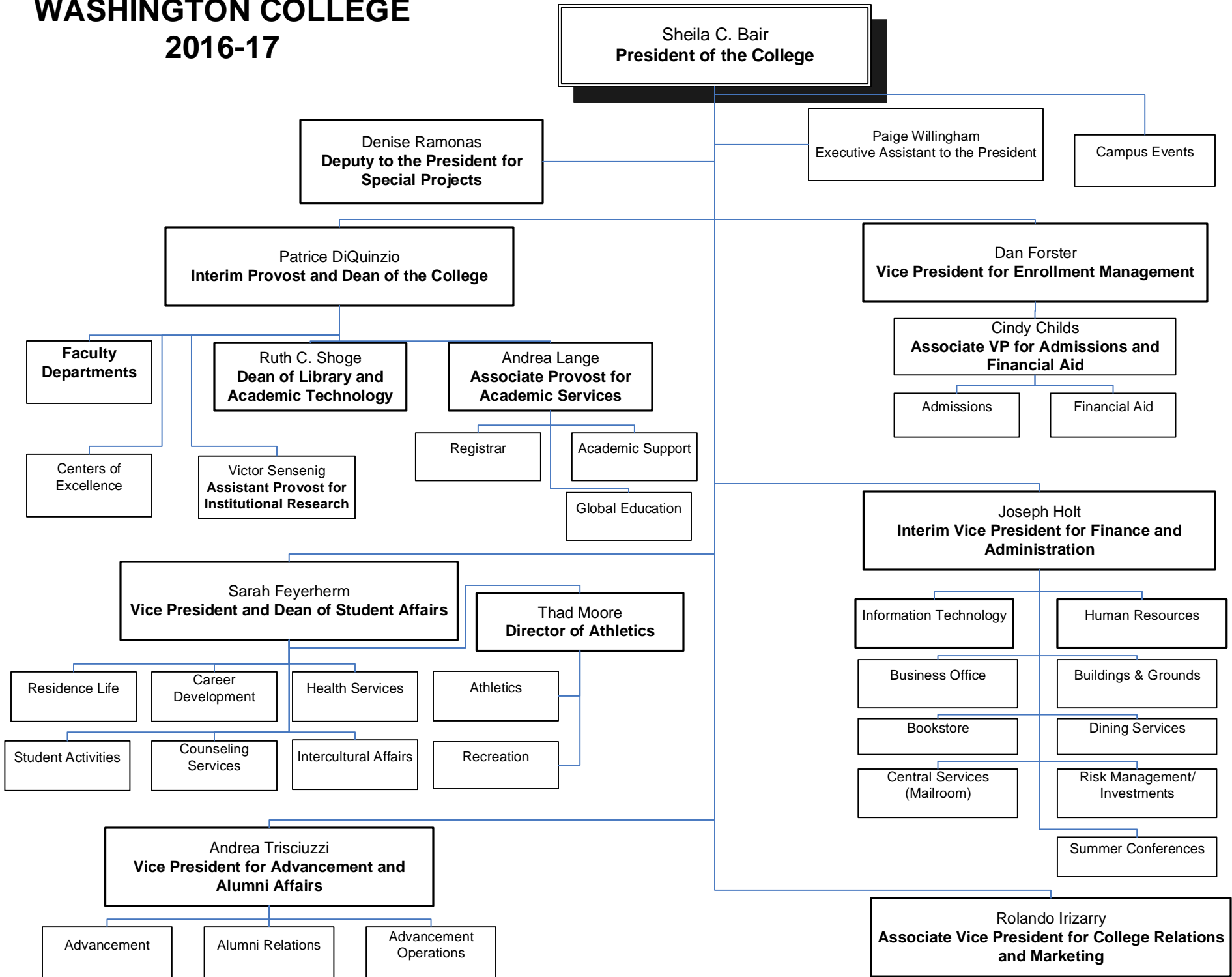
⁴ Past Years' Values for Average gift size have been recalculated based on new reporting procedures.

⁵ Beginning in FY11, the solicitable base is calculated to include active alumni only.

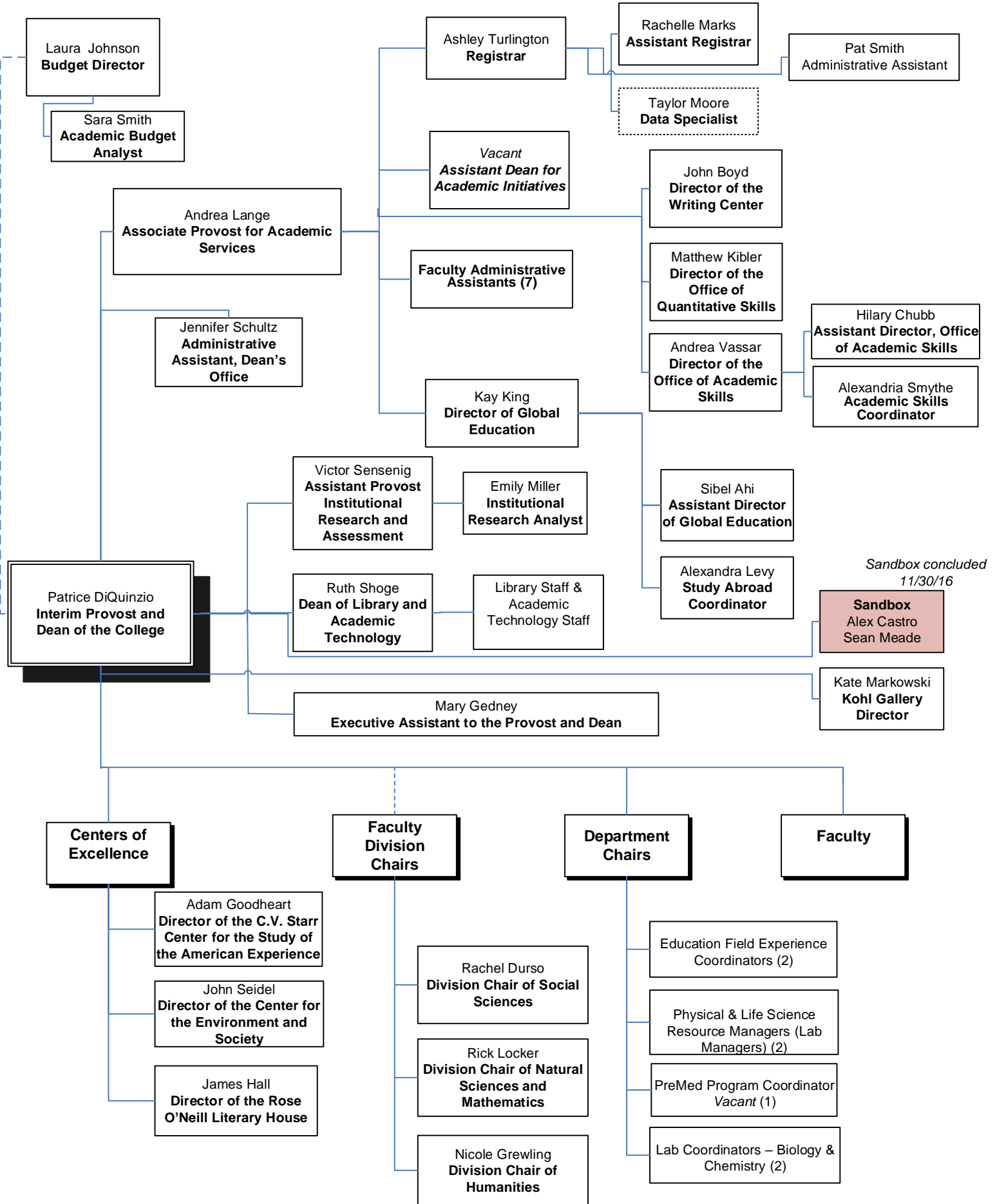
WASHINGTON COLLEGE 2016-17



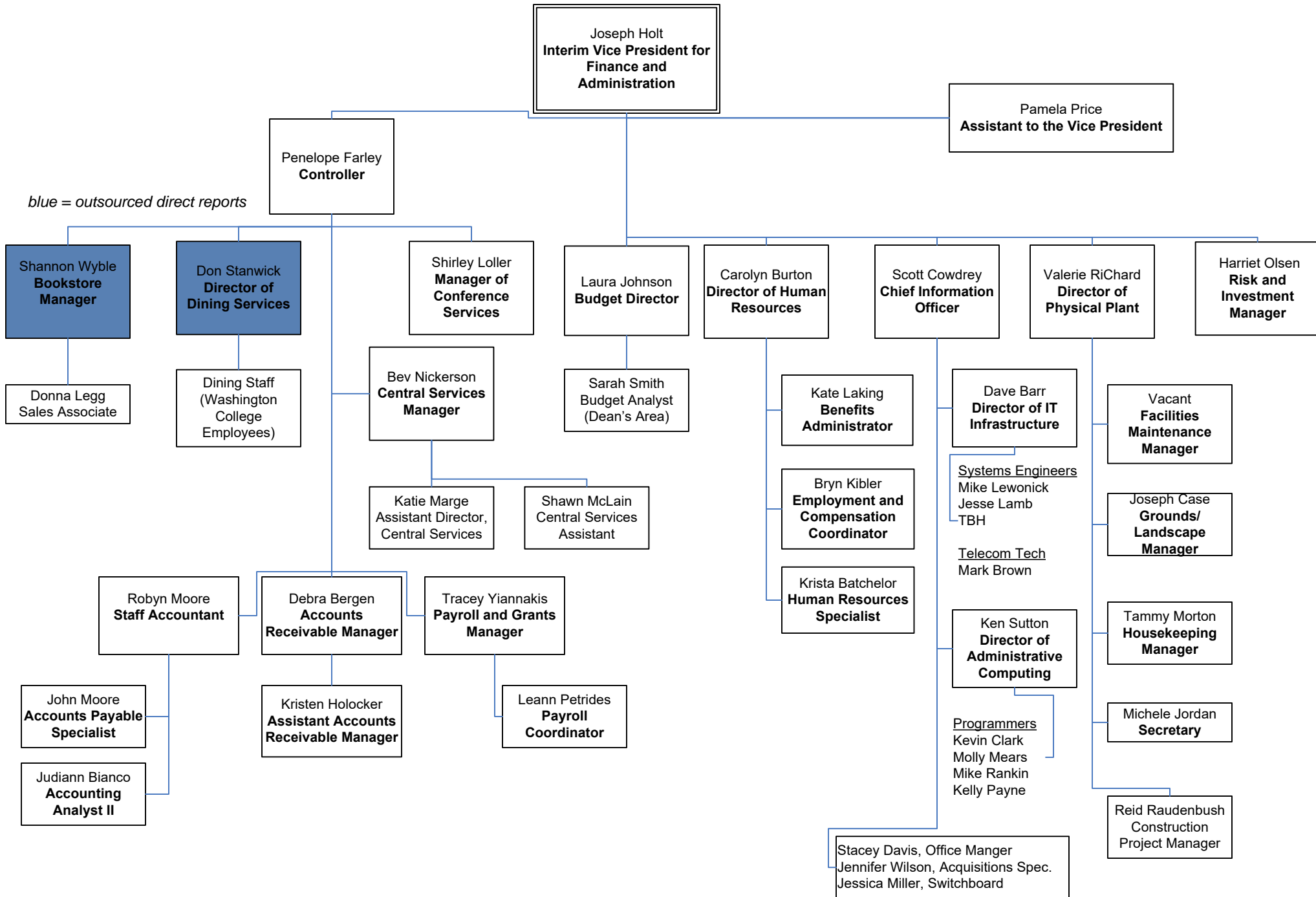
WASHINGTON COLLEGE 2016-17



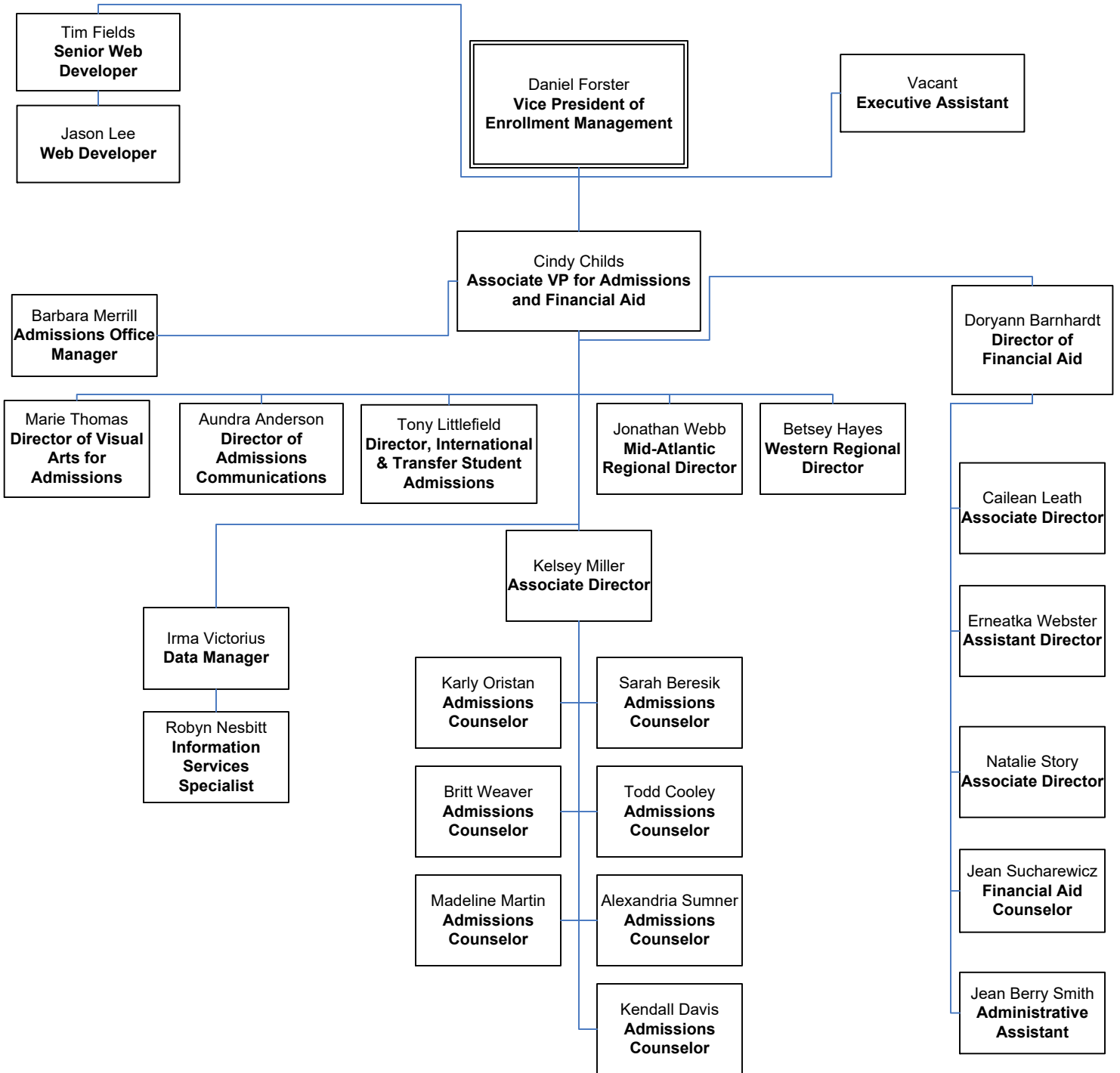
OFFICE OF THE PROVOST AND DEAN



FINANCE & ADMINISTRATION 2016-17

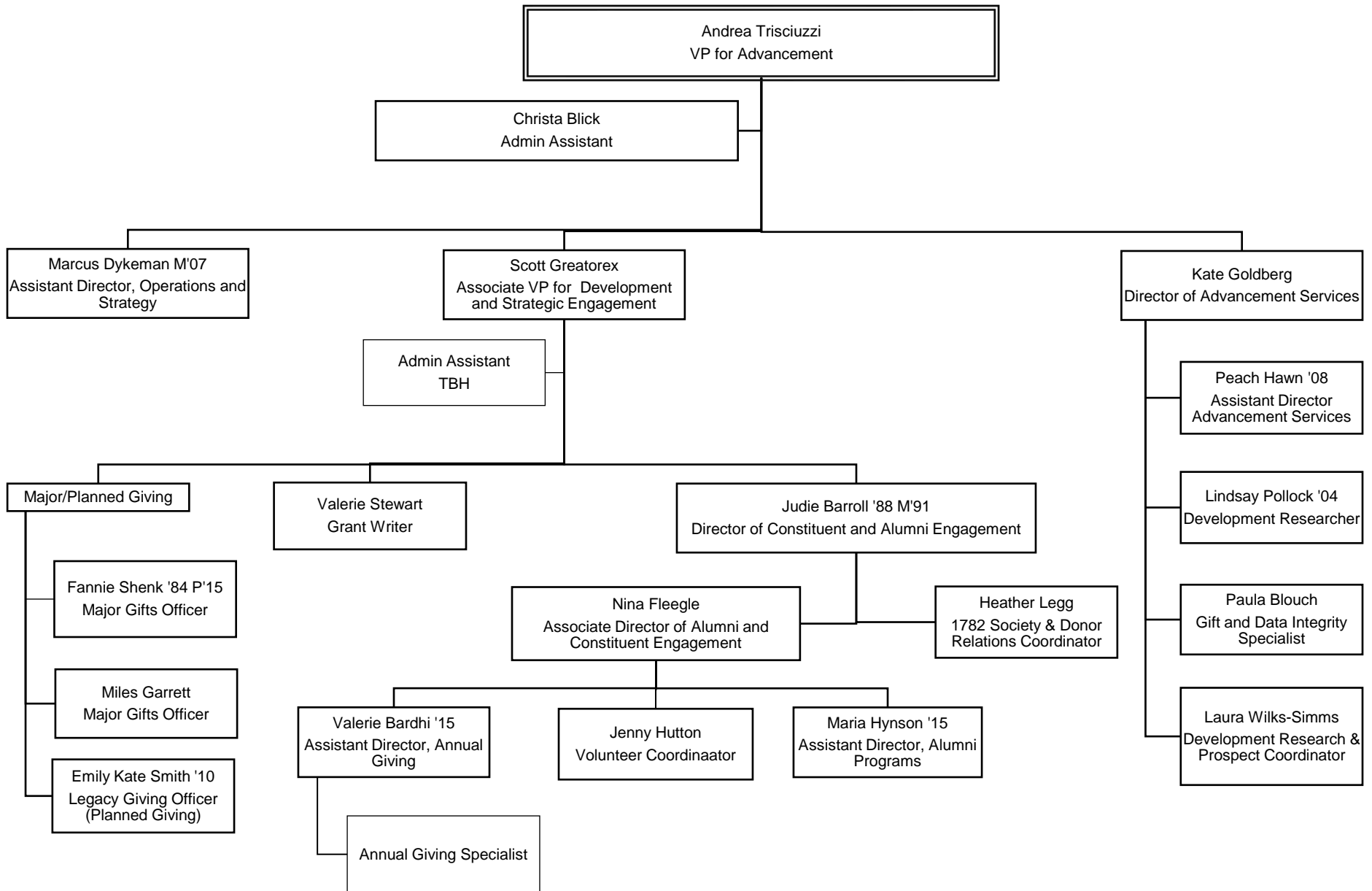


ENROLLMENT MANAGEMENT 2016-17



Advancement and Alumni Relations 2016-17

as of 12/2016



STUDENT AFFAIRS 2016-17

As of 3/27/17

Sarah Feyerherm
Vice President for Student Affairs
and Dean of Students

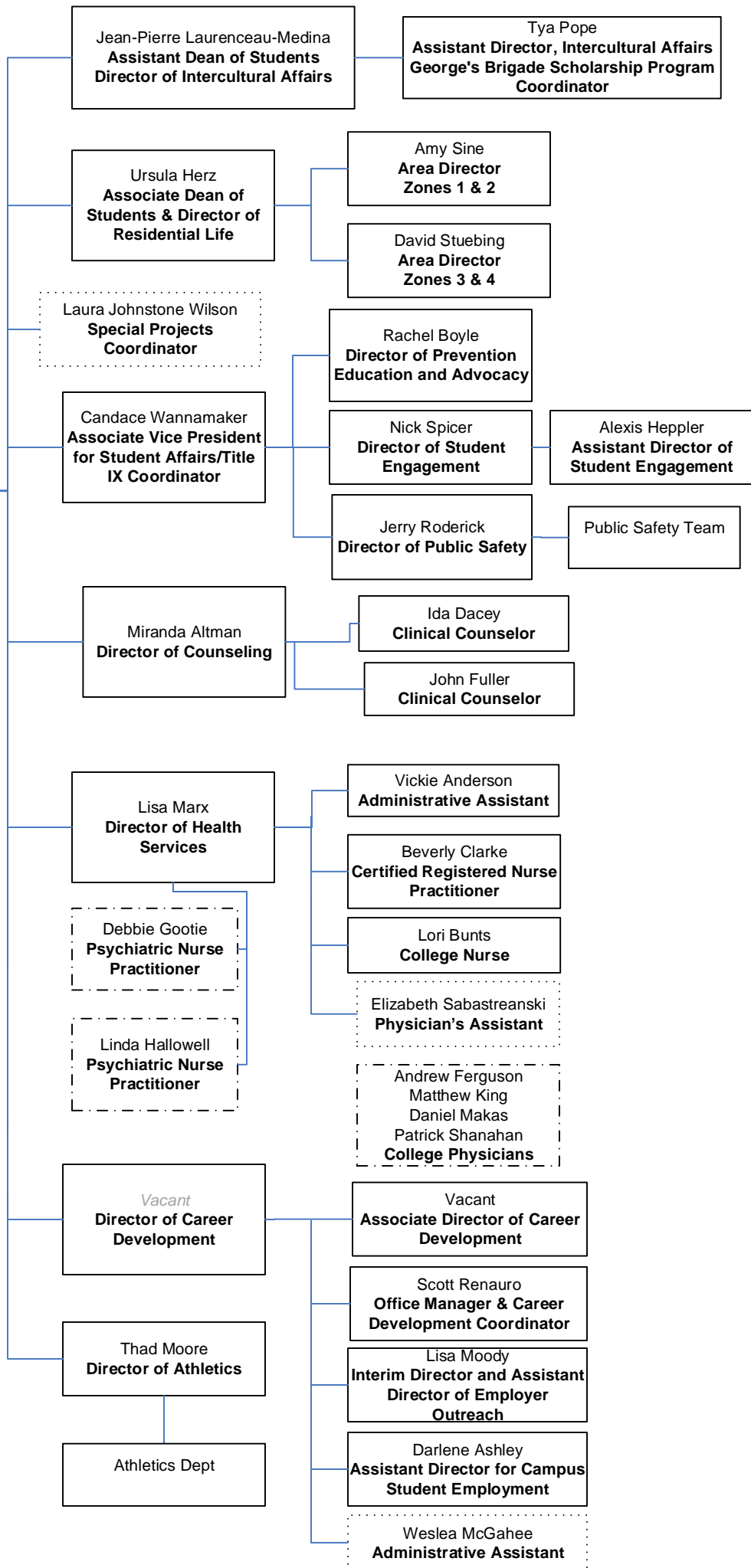
Lisa Jones
Assistant to Vice President /
Office Manager

KEY:

Full-time employees

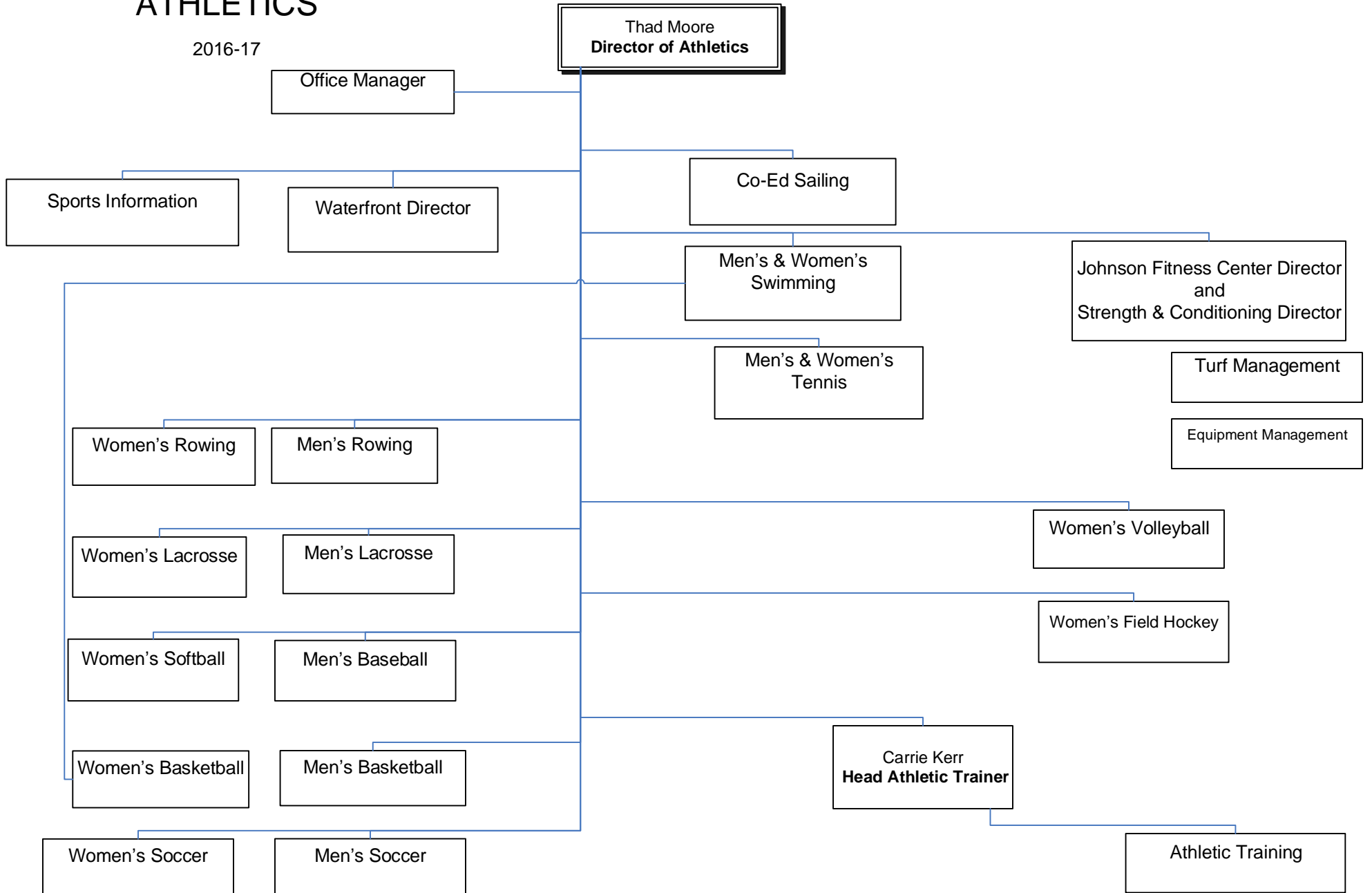
Part-time employees

Non-employees (e.g. consultants, contractors, etc.)

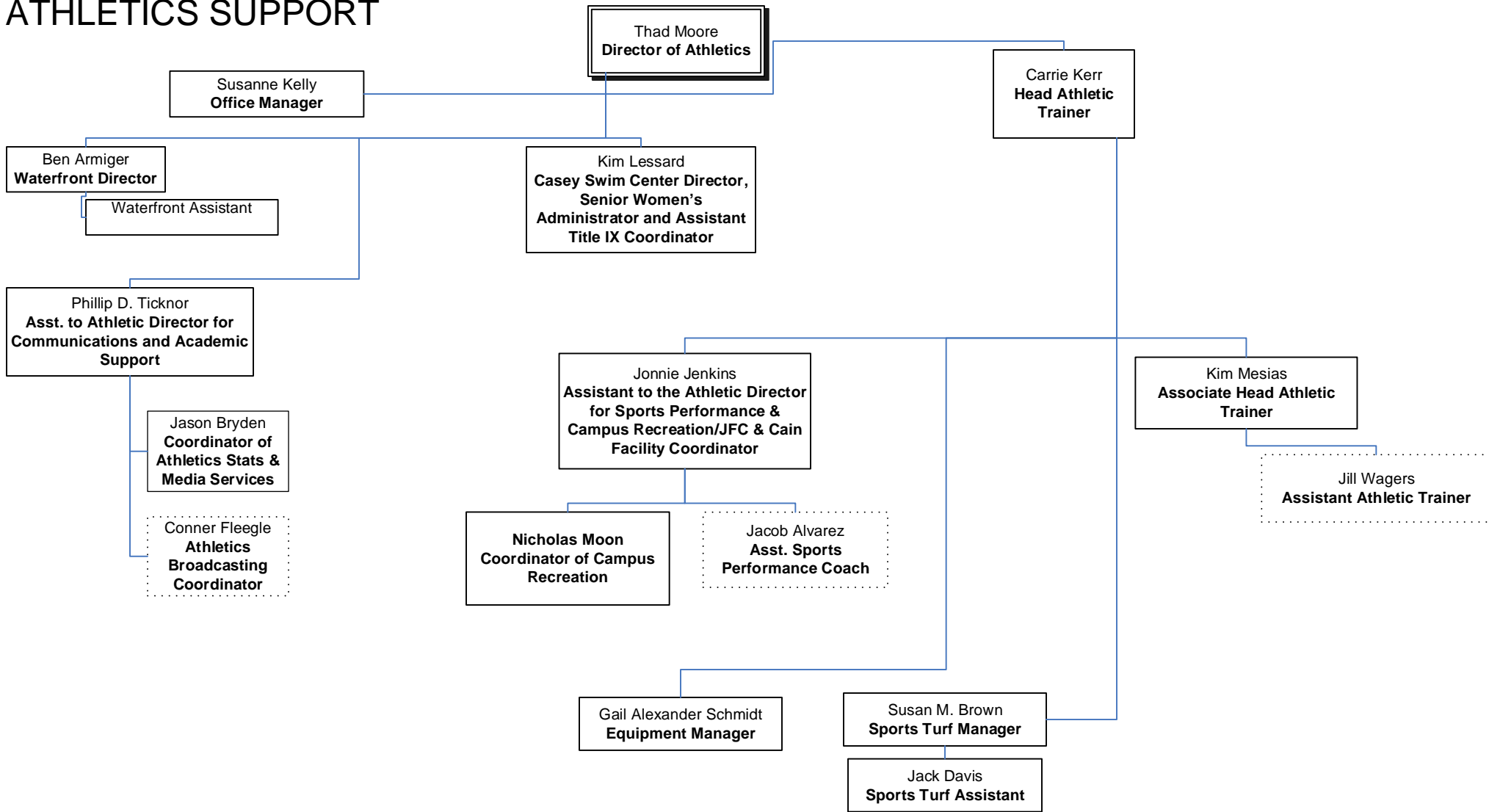


ATHLETICS

2016-17



ATHLETICS SUPPORT

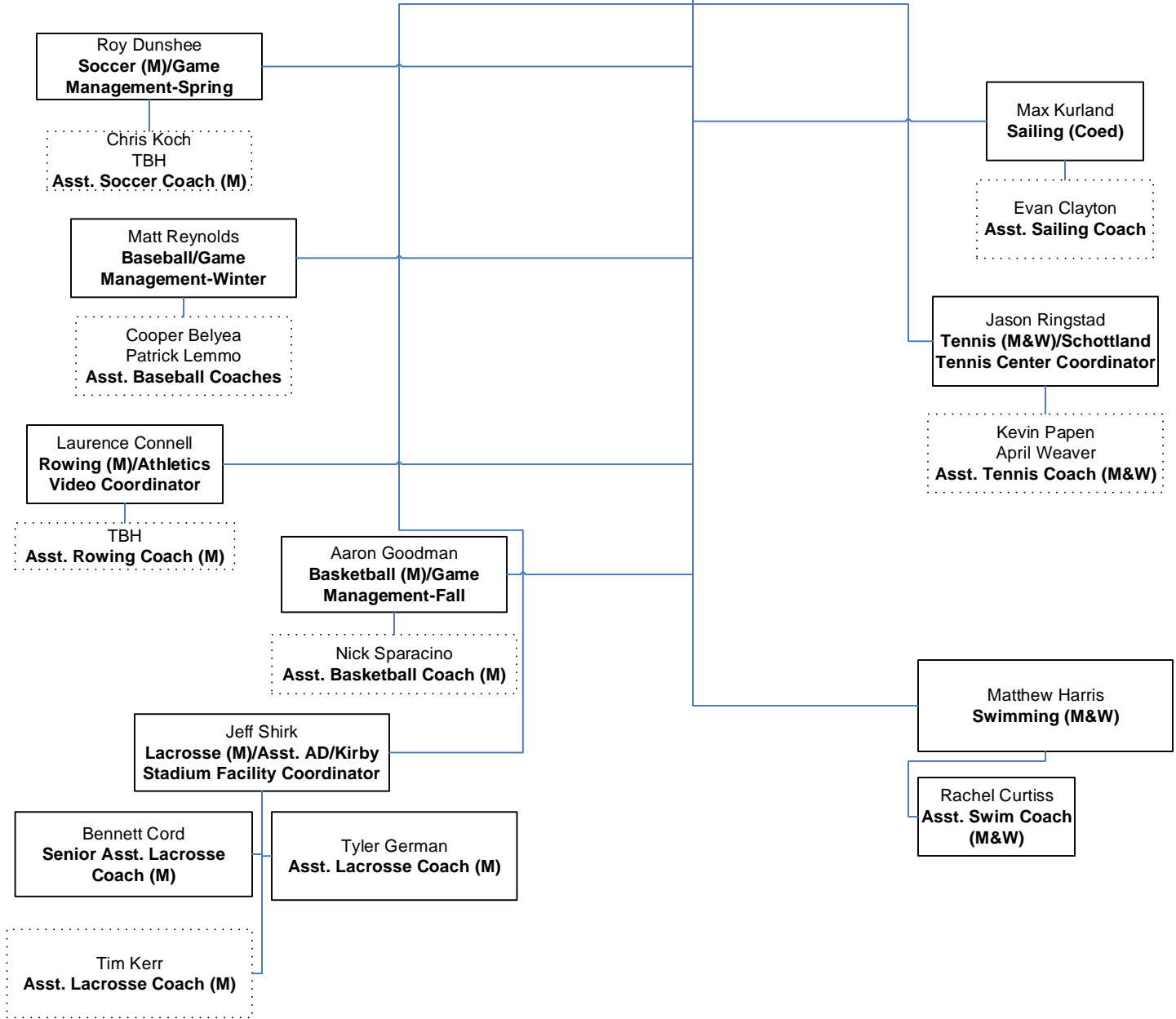


Solid Line = Full-Time
Dotted Line = Part-Time

MEN'S ATHLETICS

2016-17

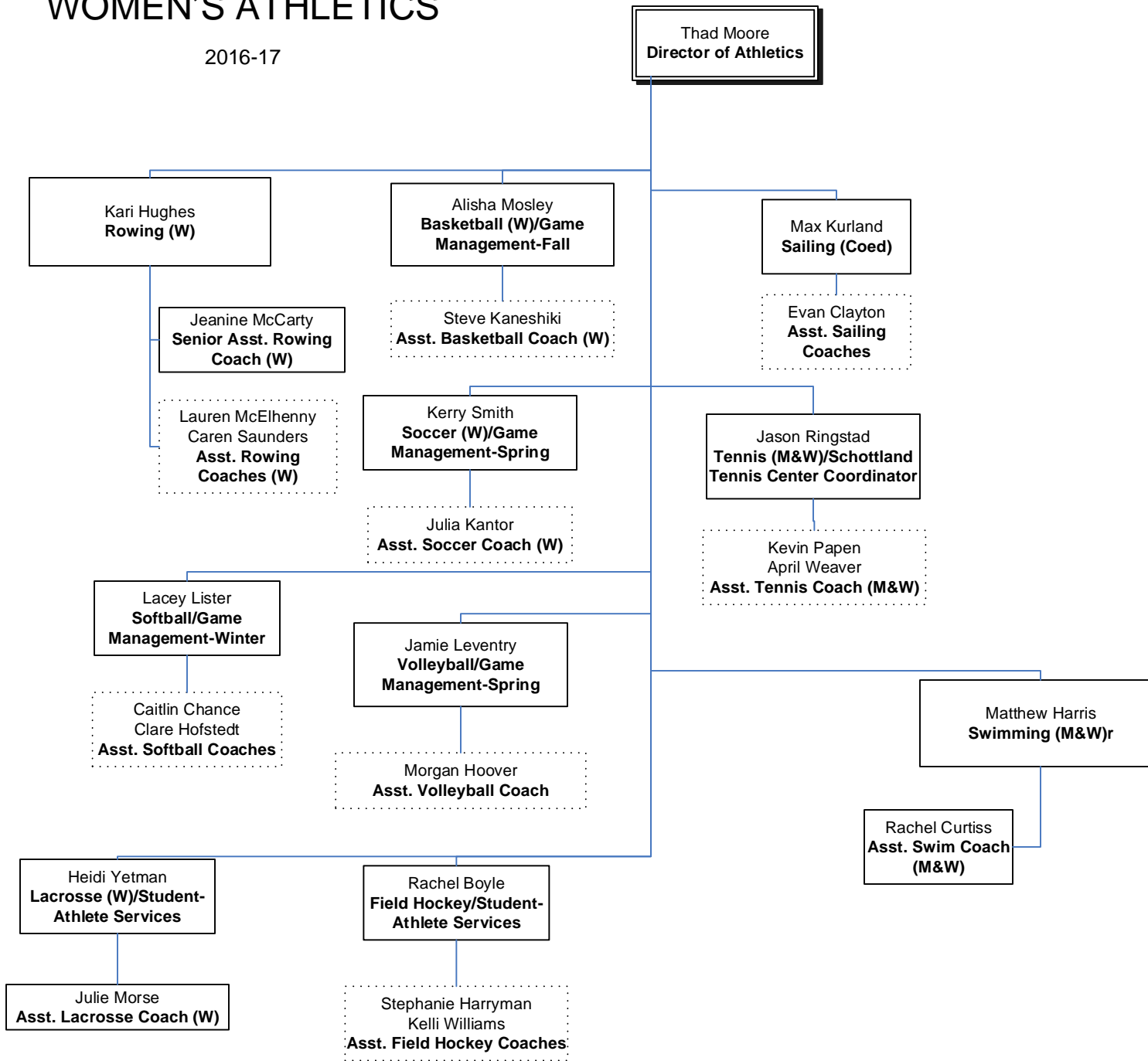
Thad Moore
Director of Athletics



Solid Line = Full-Time
Dotted Line = Part-Time

WOMEN'S ATHLETICS

2016-17



Solid Line = Full-Time
Dotted Line = Part-Time

Library and Academic Technology

