



WASHINGTON COLLEGE



FACT BOOK

2015-2016



Washington College Quick Facts, 2015-16

Enrollments Fall 2015	TOTAL	FULL TIME	PART TIME
Undergraduates			
Matriculated	1386	1380	6
Non-Matriculated	37	20	17
Total Undergraduates	1423	1400	23
Graduate Students	4	0	4
Total Student Headcount	1427	1400	27

Undergraduate International Students	
Matriculated	136
Exchange	19
Total countries represented	32

Undergraduate Ethnicity Status	TOTAL	PCT	FULL TIME	PART TIME
Native-American	12	0.9%	12	0
Asian-American	31	2.2%	31	0
African-American	72	5.2%	71	1
Hispanic-American	37	2.7%	37	0
More than one race	26	1.9%	26	0
Hawaiian-Pacific Islander	0	0.0%	0	0
White	1010	72.9%	1005	5
Other / Unknown	62	4.5%	62	0
Non-Resident Alien	136	9.8%	136	0
TOTAL	1386	100%	1380	6
Total Minorities	178	12.8%	177	1

Note: Counts include matriculated undergraduates only.

Undergraduates Receiving Financial Aid	TOTAL	PCT
First-time Freshmen	372	95.1%
All Full-time Students	1,265	90.4%

Degrees Awarded 2014-15	TOTAL
Bachelor of Arts	280
Bachelor of Science	67
Master's	15

Note: Counts do not include double majors.

Washington College Fall 2015 Faculty	TOTAL
Total WC Full-Time Faculty	113
Total WC Part-Time Faculty	51
Tenured / Tenure Track with Terminal Degree	98%

Table of Contents

	<u>Page</u>
I. Introduction	
Quick Facts	i
Table of Contents	ii
Mission Statement	1
Board of Visitors and Governors	2
Senior Staff	3
II. Students	
Washington College Admissions Statistics	4
Minority and International Admissions Statistics	5
Geographic Distribution of Freshman Class	6
Enrollment by Full/Part-Time Students/Class and Gender	7
International Student Population	8
Retention and Graduation Rates for Freshmen Cohorts	9
Degrees Awarded by Major	10
Dean's List/Honors Awarded	11
Varsity Athletic Participation	12
III. Faculty	
Faculty Roster	14
Faculty by Rank, Gender, Tenure Status	15
Five-Year Trend in Faculty Tenure	16
Division Chairs, Academic Department Chairs and Program Directors	17
Faculty Sabbatical and Leave Data	18
Undergraduate Student-Faculty Ratios	19
IV. Finances and Financial Aid	
Revenues and Expenditures	20
Financial Aid Totals	21
Financial Aid Awards	22
Financial Aid History	24
V. Facilities	
On and Off-Campus Housing	25
VI. Advancement	
Alumni Annual Giving History	26
VII. College Organization and Governance	
Organizational Charts	27

MISSION STATEMENT

Washington College challenges and inspires emerging citizen leaders to discover lives of purpose and passion.

We share these values of our founding patron, George Washington: integrity, determination, curiosity, civility, leadership, and moral courage. We offer academic rigor and self-discovery in a supportive, residential community of well-qualified, diverse, and motivated individuals. We develop in our students habits of analytic thought and clear communication, aesthetic insight, ethical sensitivity, and civic responsibility.

Unhurried conversation and close connections with an exceptional faculty and staff complement a broad curriculum of study. A beautiful campus, ready access to exciting cities and the Chesapeake Bay, and engagement with cultures and communities locally and around the world afford our students ample resources and opportunities for personal exploration and shared challenges.

We prepare our students for rich and fulfilling lives; for myriad and unpredictable opportunities; for a lifetime of learning, leadership, and productive endeavor.

The enduring values of Washington College – critical thinking, effective communication, and moral courage – move the world.

**Washington College
Board of Visitors and Governors
2015-16**

Officers

H. Lawrence Culp, Jr. '85, Chairman
Richard L. Creighton '73, Vice Chairman
Lynn L. Bergeson, P'14, Secretary
Ann Dorsey Horner '80, Treasurer
Sheila C. Bair, President

Members

Patrick William Allender P'11
Sheila C. Bair
Lynn L. Bergeson, P'14
Norris W. Commodore, Jr. '73
Jayne T. Conroy, P'12, P'15
Richard L. Creighton '73
Thomas C. Crouse, Jr. '59
H. Lawrence Culp, Jr. '85
Peter D. Davenport
Regis de Ramel '97
John G. Eckenrode, P'08
Daniel Forrester
Thomas H. Gale
Stephen T. Golding '72 P'05
Richard B. Grieves '83
William J. Harvey, P'10
Michael Holtzman
Ann Dorsey Horner '80
Nina Rodale Houghton P'82, GP'11

Marcia Ann Invernizzi '72
Margaret Goldstein Janney '76
Kirk B. Johnson
Beth Kahn Leaman '73
Jim Lim, '91
Thomas H. Maddux P'78
Edward P. Nordberg '82
Bert W. Rein
Geoffrey M. Rogers, Sr. '80 P'06
Dr. Henry F. Sears
Ralph Snyderman, '61 H'04
Daryl L. Swanstrom '69-
John H. Timken '03
Donald C. Tomasso P'98
Deborah Moxley Turner, '77
Peter Van Dyke
Matthew T. Weir '90
John R. Whitmore
Albert J.A. (Jay) Young '81

Emeritus members

Jeannie P. Baliles '62
Margaret R. Bennett
Betty Brown Casey '47 H'86
Libby Anderson Cater Halaby H'90
Barbara T. Cromwell '55
Jack S. Griswold P'94 H'07
Christian Havemeyer
Sheryl V. Kerr H'04
Charles Lewis Lea, Jr.
Craig Lewis P'79 GP'05
Thomas J. Maher P'83 P'85

John A. Moag, Jr. '77
Zung Nguyen '77
W. James Price IV, P'80 H'90
John J. Roberts
William R. Russell, Jr. '53 P'80
B. Francis Saul II H'08
L. Clifford Schroeder P'91, P'94, H'01
Mark A. Schulman '67
Linda J. Spire
W. Jackson Stenger '49
George S. Wills

**Washington College
Senior Staff**

Sheila C. Bair	President
Emily Chamlee-Wright	Provost and Dean of the College
Mark Hampton	Vice President for Finance and Administration
Joseph Holt	Chief of Staff
Satyajit Dattagupta	Vice President for Enrollment Management
Xavier Cole	Vice President and Dean of Student Affairs
Andrea Trisciuzzi	Vice President of College Advancement
Michael O'Connor	Associate Vice President for College Relations and Marketing
Bryan L. Matthews	Director of Athletics and Assistant to the President for Special Projects
Patrice DiQuinzio	Associate Provost for Academic Services
Ruth C. Shoge	Dean of Library and Academic Technology
Carolyn Burton	Director of Human Resources
Scott Cowdrey	Chief Information Officer

Washington College Fact Book 2015-16

Washington College Admissions Statistics: Fall 2010 through Fall 2015

		Fall Term					
		2010	2011	2012	2013	2014	2015
FRESHMEN	Applied	3,981	4,799	4,484	4,647	5,318	6,847
	Accepted	2,962	2,715	2,976	3,088	2,960	3,702
	% Accepted	74%	57%	66%	66%	56%	54%
	Enrolled	421	399	400	349	388	391
	% Enrolled	14%	15%	14%	11%	13%	11%
TRANSFERS	Applied	81	117	112	139	150	140
	Accepted	44	73	72	97	56	87
	% Accepted	54%	62%	64%	70%	37%	62%
	Enrolled	25	43	30	34	31	36
	% Enrolled	57%	59%	42%	35%	55%	41%
TOTAL	Total Applied	4,062	4,916	4,596	4,786	5,468	6,987
	Total Accepted	3,006	2,788	3,048	3,185	3,016	3,789
	% Accepted	74%	57%	66%	67%	55%	54%
	Total Enrolled	446	442	430	383	419	427
	% Enrolled	15%	16%	14%	12%	14%	11%

Washington College Freshmen Admissions Profile: Fall 2010 through Fall 2015

Academic and Demographic Characteristics	Fall Term					
	2010	2011	2012	2013	2014	2015
Mean SAT Verbal	584	592	584	583	583	592
Mean SAT Math	577	579	570	579	579	589
Mean SAT Total	1161	1171	1154	1162	1162	1181
Mean High School GPA	3.49	3.56	3.48	3.53	3.56	3.65
Top Tenth	40%	32%	35%	33%	34%	39%
Top Quarter	65%	66%	65%	62%	62%	65%
Top Half	92%	95%	90%	88%	88%	90%
NHS Members	41%	40%	38%	38%	39%	40%
Public High School	68%	72%	68%	71%	70%	59%
Non-Public High School	32%	28%	32%	29%	30%	41%
Maryland Residents	54%	48%	42%	47%	40%	40%
Out-Of-State Residents	46%	52%	58%	53%	60%	60%
Female	57%	58%	57%	58%	59%	54%
Male	43%	42%	43%	42%	41%	46%

Source: Admissions Office

**Washington College First-time Freshmen
Minority and International Student Statistics**

		Fall Term					
		2010	2011	2012	2013	2014	2015
ASIAN	Applied	169	249	197	370	350	476
	Accepted	123	112	141	218	260	318
	% Accepted	73%	45%	71%	59%	74%	67%
	Enrolled	10	4	4	8	18	14
	% Enrolled	8%	4%	4%	2%	5%	4%
		2010	2011	2012	2013	2014	2015
BLACK	Applied	446	795	756	782	743	1276
	Accepted	177	183	251	271	372	600
	% Accepted	40%	23%	33%	35%	50%	47%
	Enrolled	21	15	10	18	23	35
	% Enrolled	12%	8%	4%	5%	7%	10%
		2010	2011	2012	2013	2014	2015
HISPANIC	Applied	248	349	370	417	457	771
	Accepted	155	142	184	226	299	447
	% Accepted	63%	41%	50%	54%	65%	58%
	Enrolled	19	14	23	14	16	21
	% Enrolled	12%	10%	13%	4%	5%	6%
		2010	2011	2012	2013	2014	2015
INTERNATIONAL	Applied	90	140	161	30	40	157
	Accepted	47	70	103	22	N/A	34
	% Accepted	52%	50%	64%	73%	N/A	22%
	Enrolled	5	14	26	22	31	34
	% Enrolled	11%	20%	25%	6%	9%	10%
FIRST-YEAR STUDENT TOTALS		2010	2011	2012	2013	2014	2015
Minorities		12%	8%	9%	11%	16%	20%
International Citizens		1%	4%	6%	6%	9%	10%

Source: Admissions Office

Geographic Distribution of Freshman Class

	Fall Term					
	2010	2011	2012	2013	2014	2015
Total Freshmen	421	399	400	349	388	391
Region						
Mid-Atlantic						
Maryland	225	192	166	165	156	157
Delaware	24	28	15	8	29	39
New Jersey	50	52	58	37	36	32
New York	11	19	21	14	17	12
Pennsylvania	45	51	61	47	43	38
Washington DC	1	1	0	1	3	2
Total Mid-Atlantic	356	343	321	272	284	280
% of Total	85%	86%	80%	78%	73%	72%
New England						
Connecticut	12	8	9	10	15	15
Massachusetts	8	6	7	6	9	8
Maine	1	0	0	0	0	0
New Hampshire	0	1	2	0	0	0
Rhode Island	0	3	0	2	0	3
Vermont	0	1	1	1	2	0
Total New England	21	19	19	19	26	26
% of Total	5%	5%	5%	5%	7%	7%
South						
Total South	28	17	22	24	24	22
% of Total	7%	4%	6%	7%	6%	6%
West /Southwest						
Total West/Southwest	6	6	9	9	8	17
% of Total	1%	2%	2%	3%	2%	4%
Mid-west						
Total Mid-West	2	3	4	0	2	6
% of Total	0%	1%	1%	0%	1%	2%
U.S. Territories & Foreign Countries						
Total from region	8	11	25	25	44	40
% of Total	2%	3%	6%	7%	11%	10%

Source: Office of Institutional Research

**Matriculated Undergraduates
Enrollment by Full or Part-time Status**

Enrollment Status	Fall Term				
	2011	2012	2013	2014	2015
Full-Time	1446	1444	1410	1396	1380
Percent	99.5%	99.0%	99.0%	99.1%	99.6%
Part-Time	7	14	14	12	6
Percent	0.5%	1.0%	1.0%	0.9%	0.4%
Total Headcount	1453	1458	1424	1408	1386
Full-time Equivalent	1448.3	1448.7	1414.7	1400.0	1382.0

**Matriculated Undergraduates
Enrollment by Class Level and Gender**

	Fall Term				
	2011	2012	2013	2014	2015
Freshmen	451	418	380	414	413
Men	192	181	166	175	196
Women	259	237	214	239	217
Sophomores	356	375	356	336	378
Men	149	164	163	149	166
Women	207	211	193	187	212
Juniors	323	353	349	317	298
Men	134	134	149	130	126
Women	189	219	200	187	172
Seniors	323	312	339	341	297
Men	137	132	125	144	125
Women	186	180	214	197	172
Total Enrollment	1453	1458	1424	1408	1386
Men	612	611	603	598	613
Women	841	847	821	810	773

Note: Counts above exclude students exclusively auditing classes.

Source: Registrar's Office

**Undergraduate International Students at
Washington College by Country**

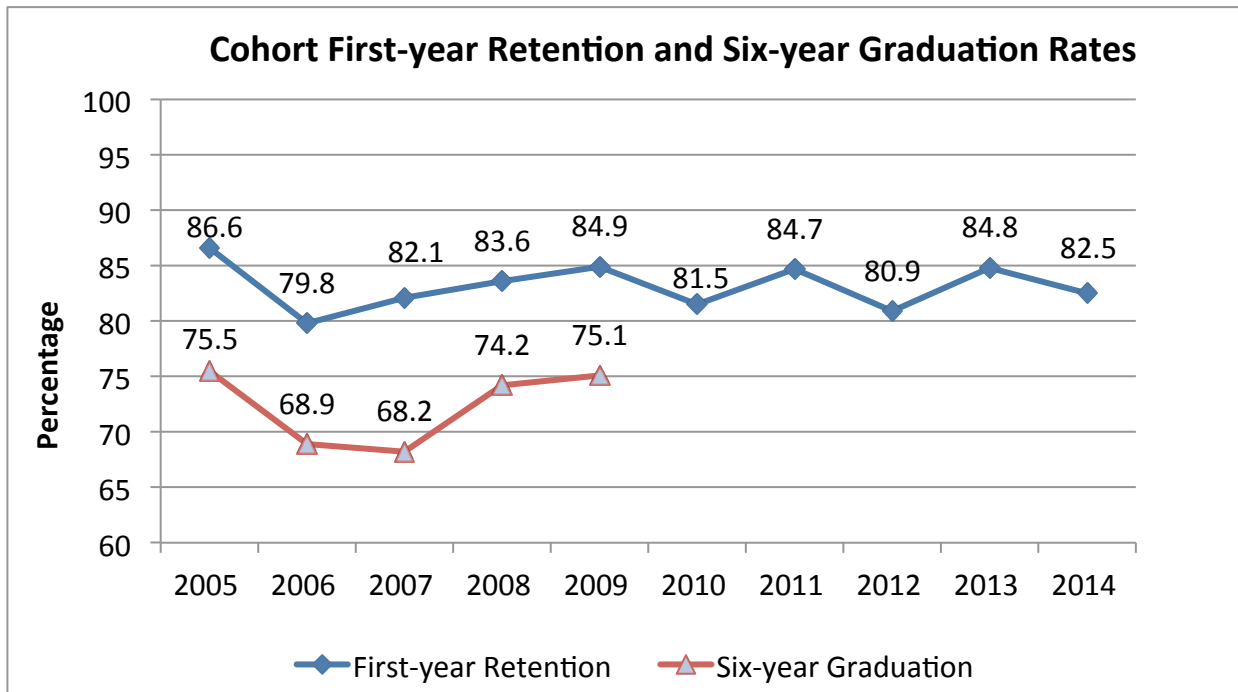
Country	Fall 2015		
	Matriculated (Visa)	Exchange	Total
Argentina	0	1	1
Austria	1	0	1
Bahamas	1	0	1
Bangladesh	1	0	1
Canada	2	0	2
China & Hong Kong	85	0	85
Colombia	1	0	1
Eritrea	2	0	2
Ethiopia	2	0	2
Finland	0	2	2
France	1	3	4
Germany	2	3	5
India	7	0	7
Italy	0	1	1
Indonesia	1	0	1
Japan	8	2	10
Jordan	4	0	4
Morocco	1	0	1
Netherlands	0	1	1
Nepal	1	0	1
Nigeria	2	0	2
Norway	1	0	1
Saudi Arabia	1	0	1
South Korea	4	2	6
Spain	1	0	1
Sweden	1	0	1
Taiwan	3	0	3
Thailand	1	0	1
Turkey	0	1	1
United Kingdom	1	2	3
Vietnam	2	0	2
Total	137	18	155

Note: Counts include students with Nonresident Alien Status and Visiting Exchange classification.

Source: Office of Institutional Research and Assessment

Retention and Graduation Rates of First-time, Full-time Cohorts

Entering Fall Term	Retention Rates					Graduation Rates				
	1st Fall	2nd Fall	3rd Fall	4th Fall	Enr 5th Sem	within 3 yrs	within 4 yrs	within 5 yrs	within 6 yrs	Total
2005 N % retention	343 100.0%	297 86.6%	261 76.1%	249 74.9%	11 3.2%	8 2.3%	248 72.3%	256 74.6%	259 75.5%	260 75.8%
2006 N % retention	312 100.0%	249 79.8%	223 71.5%	212 68.9%	14 4.5%	3 1.0%	202 64.7%	214 68.6%	215 68.9%	217 69.6%
2007 N % retention	324 100.0%	266 82.1%	233 71.9%	222 69.8%	14 4.3%	4 1.2%	208 64.2%	210 64.8%	221 68.2%	224 69.1%
2008 N % retention	415 100.0%	347 83.6%	315 75.9%	298 73.5%	15 3.6%	7 1.7%	289 69.6%	303 73.0%	308 74.2%	308 74.2%
2009 N % retention	378 100.0%	321 84.9%	292 77.2%	279 75.4%	13 3.4%	6 1.6%	269 71.2%	282 74.6%	284 75.1%	
2010 N % retention	421 100.0%	343 81.5%	313 74.3%	300 73.4%	12 2.9%	9 2.1%	293 69.6%	306 72.7%		
2011 N % retention	399 100.0%	338 84.7%	313 78.4%	308 77.4%	9 2.3%	1 0.3%	293 73.4%			
2012 N % retention	397 100.0%	321 80.9%	283 71.3%	269 69.8%		8 2.0%				
2013 N % retention	349 100.0%	296 84.8%	269 77.1%							
2014 N % retention	388 100.0%	320 82.5%								



Washington College Undergraduate Degrees Awarded by Major (2011-2015)

	2011			2012			2013			2014			2015		
	Major	Double Major	Total	Major	Double Major	Total	Major	Double Major	Total	Major	Double Major	Total	Major	Double Major	Total
Bachelor of Arts															
American Studies	5	1	6	4	1	5	0	0	0	2	1	3	3	0	3
Anthropology	8	0	8	10	3	13	7	2	9	12	7	19	9	4	13
Art	11	2	13	8	3	11	7	3	10	7	2	9	6	4	10
Business Management	50	1	51	50	5	55	47	2	49	43	1	44	70	5	75
Computer Science	1	0	1	0	1	1	6	1	7	1	0	1	7	0	7
Drama	5	2	7	8	2	10	1	3	4	8	1	9	8	1	9
Economics	18	6	24	19	4	23	29	6	35	14	9	23	19	11	30
English	25	2	27	26	1	27	24	1	25	26	1	27	24	3	27
Environmental Studies	15	0	15	17	0	17	21	2	23	16	1	17	19	4	23
French	1	0	1	1	0	1	1	2	3	1	4	5	2	0	2
German	1	2	3	0	0	0	0	0	0	0	1	1	0	1	1
History	12	0	12	27	3	30	15	1	16	14	2	16	23	1	24
Human Development	9	0	9	13	0	13	10	0	10	21	1	22	9	0	9
Humanities	0	0	0	6	0	6	2	1	3	1	1	2	5	1	6
Intercultural Studies	0	0	0	1	0	1	1	0	1	0	0	0	1	0	1
International Studies	14	0	14	17	2	19	12	1	13	9	2	11	14	1	15
Mathematics	4	0	4	8	1	9	10	5	15	9	1	10	6	7	13
Music	2	0	2	1	1	2	1	2	3	5	2	7	4	1	5
Philosophy	1	2	3	4	3	7	1	1	2	3	4	7	3	6	9
Political Science	12	1	13	11	1	12	13	1	14	24	1	25	18	0	18
Psychology	13	1	14	26	1	27	25	1	26	37	1	38	24	3	27
Sociology	17	1	18	7	0	7	13	3	16	15	1	16	5	2	7
Spanish - Hisp. Studies	2	0	2	2	1	3	1	4	5	3	4	7	1	7	8
Student Designed	2	0	2	1	0	1	0	0	0	0	0	0	0	0	0
B.A. Totals	228	21	249	267	33	300	247	42	289	271	48	319	280	62	342
Bachelor of Science															
Biology	23	0	23	38	0	38	30	1	31	39	0	39	39	1	40
Chemistry	2	0	2	7	2	9	9	1	10	10	1	11	12	2	14
Environmental Science	-	-	-	-	-	-	-	-	-	1	0	1	1	0	1
Physics	0	0	0	6	0	6	4	0	4	3	0	3	7	0	7
Psychology	3	1	4	7	1	8	5	3	8	7	2	9	8	2	10
Art	0	1	1	0	0	0	0	0	0	0	0	0	0	0	0
B.S. Totals	28	2	30	58	3	61	48	5	53	60	3	63	67	5	72
Total B.A. & B.S.	256	23	279	325	36	361	295	47	342	331	51	382	347	67	414

Source: Office of Institutional Research

Academic Honors: Dean's List

	2010-11		2011-12		2012-13		2013-14		2014-15	
	Fall	Spring	Fall	Spring	Fall	Spring	Fall	Spring	Fall	Spring
Freshman Class										
Men	38	25	52	37	34	30	32	22	21	15
Women	88	66	90	57	85	58	84	51	60	41
Sophomore Class										
Men	43	34	38	41	37	29	37	31	31	28
Women	81	76	101	102	63	77	85	66	78	71
Junior Class										
Men	39	34	39	35	35	34	49	40	27	32
Women	101	76	66	70	79	95	69	75	78	52
Senior Class										
Men	29	49	50	53	40	53	46	63	54	70
Women	84	129	119	130	85	101	112	124	98	127
All Undergraduates										
Men	149	142	179	166	146	146	164	156	133	145
Women	354	347	376	359	312	331	350	316	314	291
Total Dean's List	503	489	555	525	458	477	514	472	447	436
All Matriculated Undergraduates	1385	1341	1453	1425	1458	1420	1424	1397	1408	1351
Dean's List as Percent of Total	36%	36%	38%	37%	31%	34%	36%	34%	32%	32%

Note: Dean's List in 2011-12 requires a semester GPA of at least 3.5; three or more courses, and no D's or F's. Earlier GPA cutoff was 3.4. Counts include matriculated undergraduates only.

Academic Honors: Summa, Magna, and Cum Laude and Major Prize Recipients

	2011	2012	2013	2014	2015
Summa Cum Laude	5	14	8	12	23
Magna Cum Laude	43	35	35	29	27
Cum Laude	20	43	41	31	38

Year	George Washington Medal
2010	Sarah E. Macht
2011	Rachel E. Field
2012	James H. Schelberg
2013	Kathy Thornton
2014	Jeffery D. Sullivan
2015	Madelyn N. Zins

Year	Sophie Kerr Prize
2010	Hailey L. Reissman
2011	Lisa B. Jones
2012	Kathryn J. Manion
2013	Tim Marcin
2014	Alexander C. Stinton
2015	Alexander R. Vidiani

Source: Registrar's Office

Varsity Athletic Participation

MEN	2010-11	2011-12	2012-13	2013-14	2014-15
Baseball (1919)	23	31	33	32	35
Basketball (1947)	21	19	18	14	16
Lacrosse (1928)	45	51	46	50	46
Rowing (1974)	29	32	22	26	32
Soccer (1947)	26	26	29	30	28
Swimming (1990)	12	13	13	16	16
Tennis (1947)	11	12	10	9	9
TOTALS	167	184	171	177	182

WOMEN	2010-11	2011-12	2012-13	2013-14	2014-15
Basketball (1993)	10	11	11	14	13
Field Hockey (1984)	23	20	19	20	24
Lacrosse (1981)	22	22	27	27	24
Rowing (1974)	23	23	21	27	28
Soccer (1998)	20	24	24	17	22
Softball (1977)	15	18	17	20	21
Swimming (1985)	14	18	17	15	20
Tennis (1974)	7	8	7	6	12
Volleyball (1976)	14	14	14	10	14
TOTALS	148	158	157	156	178

CO-ED	2010-11	2011-12	2012-13	2013-14	2014-15
Co-ed Sailing (1997)	M 6 W 5	M 10 W 6	M 9 W 6	M 7 W 5	M 7 W 7

Total Participants*	331	358	343	333	360
---------------------	-----	-----	-----	-----	-----

*Note: Students participating in more than one sport are counted more than once.

Source: Washington College Athletic Department

Intentionally Blank

Tenure-Track Faculty						Non-Tenure Track		
Full-time = 95						Full-time= 9/ Part-time= 68		
Full Professor	Tenured	Associate Professor	Tenured	Assistant Professor	Tenured	Full-time	Part-time, continued	
						Assistant Professor	Lecturer	
Brien, K	Y	Krochmal, A	Y	Anderson, E	Y	Calloway, H Khan, N Kramer, A Moreno, R Walsh, P Williams, L Windelborn, J N=7	Anthony, T	Hepler, J
Chamlee-Wright, E	Y	Lampman, A	Y	Beasley, C	N		Bauer, J	Hughes, K
Daigle, D	Y	Littlefield, L	Y	Brewster, H	N		Bordeaux, S	Johnson, L
Deckman, M	Y	Lobo, A	Y	Bunten, B (L)	N		Boyd, J	Kerr, C
DeProspo, R	Y	Locker, J	Y	Campbell, C	N		Brower, M	Kesey, R
Gillin, R	Y	Marteel-Parrish, A	Y	Carr, J	N		Buckley, M	Kesner, L
Hamilton, E	Y	Mayer, A	Y	Case, A	N		Calloway, D	Kibler, M
Lin, J	Y	Maynard, K	Y	Deanda-Camacho, E	N	Castro, A	Klopocic, P	
Lynch, R	Y	McCabe, M (S)	Y	Durso, J	N	Castro, K	Kohl, B	
Moncrief, K	Y	McCollum, J	Y	Eanes, R	N	Chatellier, D	Lessard, K	
Spilich, G	Y	McKillop, K	Y	Eckelman, L	N		Clark, E	Lyons, D
Striner, R (L)	Y	Meehan, S	Y	Fox, B	N	Kurzen, C N=1	Cole, S	McCarthy, J
Wilson, C	Y	Miller, K	Y	Fox, R	N		Ashmore, C N=1	Coppage, M
		Mooney, R	Y	Grewling, N	N	Counihan, E		McIntire, M
		Oros, A	Y	Harvey, H	N		DiQuinzio, P	Migdal, S
		Pears, P	Y	Hopper, J	N	Davenport, M		Moyer-Taylor, B
		Prud'homme, J	Y	Hull, D	N		DeArmond, D	Nazdrowicz, N
		Ramsey, S	Y	Leupold, J	N	Drischler, A		O'Connor, K
		Reynolds, M	Y	Lim, K	N		Ellison, W	Palmer, M
Associate Professor		Schindler, W (L)	Y	Lipchock, J (L)	N	Bruce, S Wagner, K N=2		Pierson, T
Amick, A	Y	Schweitzer, K	Y	Markin, J	N		Sommerfeld, P	Richard, C
Benson, J	Y	Scott, B	Y	Murphy, T	N	Ensor, A		Shomper, D
Black, T	Y	Scout, T	Y	O'Connor, E	N		Ferguson, G	Sommerfeld, P
Casado Presa, C	Y	Seidel, J	Y	Poulsen, D	N	Fields, G		Stahl, L
Connaughton, M	Y	Shad, T	Y	Rowell, J	N		Finney, V	Stinger-Stein, K
Daniels, L	Y	Sherman, L	Y	Rydell, C	N	Fithian, C		Strzelec-Noel, A
Dubrow, J	Y	Shoge, R	Y	Schwartz, N	N		Fry, A	Thuecks, S
Ford, R	Y	Sidhu, S	Y	Sommerfeld, A	N	Goodheart, A		Trinh-Smith, A
Gibson, C	Y	Sorrentino, J	Y	Thuecks, D	N		Green, J	VanDerStelt, R
Hall, J	N	Tsui, A	Y	Tsai, H	N	Hammond, W		Weibell, N
Harvey, M	Y	Verville, K	Y	Van Meter, R	N		Hardesty, M	Wharton, K
Helms, A	Y	Volansky, M	Y			Hentrich, J		Wiest, M
Kehm, K	Y	Vowels, S	Y				N=66	Winter, C
Kelty, R	Y	Wade, C	Y					
Kerchner, M	Y	Weigel, P	Y					
Knight, A	Y							
% Tenured (Full): 13/13=100%			% Tenured (Assoc): 50/51=98%			% Tenured (Asst): 1/31=3%		

Key: (S) Sabbatical (L) Leave

Source: Office of the Provost and Dean of the College and Human Resources

Fall 2015 - Full-time Faculty Breakdown

1. Full-time Faculty by Rank and Gender

	Female	Male	Total
Full Professors	4	9	13
Associate Professors	18	28	46
Assistant Professors	19	16	35
Non-Tenure Track	8	2	10
TOTAL	49	55	104

2. Full-time Faculty by Rank, Race, and Gender

	Asian		Black		Hispanic		White		Other/Unknown	
	F	M	F	M	F	M	F	M	F	M
Full Professors	0	1	0	0	0	0	4	8	0	0
Associate Professors	1	2	2	0	0	0	15	26	0	0
Assistant Professors	1	2	0	0	1	0	15	14	2	0
Non-Tenure Track	0	0	0	1	1	0	4	1	3	0
TOTAL	2	5	2	1	2	0	38	49	5	0

98% HAVE TERMINAL DEGREES

These tables above include tenure track administrators with faculty rank, librarians and those on sabbatical or leave. Sabbatical and leave replacements are not included.

Source: Office of the Provost and Dean of the College

Five Year Trend in Faculty Tenure (Fall 2010-2015)

Fall	Tenured (N)	Tenure Track (N)	Tenured and Tenure Track (N)	FTE Faculty (N)	Tenured/FTE Percentage
2010	59	29	88	108	54.6%
2011	62	29	91	119	52.0%
2012	63	30	93	122	51.8%
2013	63	31	94	126	49.9%
2014	64	31	95	129	49.7%
2015	64	31	95	124	51.8%

Notes: Table includes all tenure track faculty from roster. Beginning in Fall 2005, the AAUP definition of full-time instructional faculty is used to calculate FTE faculty. Part-time FTE is calculated according to the Common Data Set, where administrators such as the President, Provost, and librarians may be included if they teach one or more credit courses.

Source: Office of the Provost and Dean of the College

2015-16 Division Chairs

Chair, Social Sciences	---	Janet Sorrentino
Chair, Natural Sci. & Mathematics	---	J. Richard Locker
Chair, Humanities	---	Jonathan McCollum

Academic Department Chairs and Program Directors

American Studies	---	Kenneth Miller, Director
Anthropology	---	Aaron Lampman, Chair
Art and Art History	---	Aileen Tsui, Chair
Biology	---	Martin Connaughton & Mindy Reynolds, Chairs
Black Studies	---	Elena Deanda, Director
Business Management	---	Susan Vowels, Chair
Center for Teaching and Learning	---	George Spilich, Director
Chemistry	---	Anne Marteel-Parrish, Chair
Dance	---	Michele Volansky, Director
Earth and Planetary Sciences	---	Karl Kehm, Director
Economics	---	Brian Scott, Chair
Education	---	Michele Johnson, Chair
English	---	Kathryn Moncrief, Chair
Environmental Science and Studies	---	Leslie Sherman, Director
Gender Studies	---	Cristina Casado Presa, Director
Global Perspectives (GRW)	---	Aaron Lampman, Director
History	---	Janet Sorrentino, Chair
Humanities	---	Richard Gillin, Director
Information Systems	---	Austin Lobo & Susan Vowels, Co-Directors
International Studies	---	Andrew Oros, Director
Justice, Law and Society	---	Matthew McCabe, Director
Mathematics and Computer Science	---	Austin Lobo, Chair
Modern Languages	---	Pamela Pears, Chair
Music	---	Kenneth Schweitzer, Chair
Philosophy & Religion	---	Matthew McCabe, Chair
Physical Education	---	Thomas Finnegan, Chair
Physics	---	Karl Kehm, Chair
Political Science	---	Melissa Deckman, Chair
Psychology	---	Cynthia Gibson, Chair
Sociology	---	Ryan Kelty, Chair
Theatre	---	Michele Volansky, Chair
Writing Program	---	Sean Meehan, Director

Faculty Sabbatical and Leave Data: 2011-12 through 2015-16

Fall 2011

Lisa Daniels (L)
Matthew McCabe (L)
Corey Olsen (S)
Joseph Prud'homme (Jr. Leave)
Mindy Reynolds (Jr. Leave)
Ruth Shoge (S)
Shawn Stein (Jr. Leave)

Spring 2012

Erin Anderson (L)
Lisa Daniels (L)
Andrew Helms (Jr. Leave)
Aaron Krochmal (Jr. Leave)
James Martin (S)
Tahir Shad (S)
Carol Wilson (S)

Fall 2012

Bridget Bunten (L)
Elena Casado Presa (L)
Cristina Deanda Camacho (Jr. Leave)
Melissa Deckman (L)
Michael Kerchner (S)
Robert Lynch (S)
Corey Olsen (L)
Leslie Sherman (S)

Spring 2013

Aaron Amick (Jr. Leave)
Kevin Brien (S)
Melissa Deckman (S)
Karl Kehm (S)
Adalbert Mayer (Jr. Leave)
Jonathan McCollum (Jr. Leave)
Mindy Reynolds (L)
Janet Sorrentino (S)
George Spilich (S)

Fall 2013

Nicole Grewling (Jr. Leave)
Sean Meehan (S)
Tia Panfile-Murphy (PL)
Pamela Pears (S)
Susan Vowels (S)

Spring 2014

Benjamin Bellas (2/3 PL)
Somasree Dasgupta (L)
Rich De Prospo (S)
Ryan Kelty (S)
James Martin (PL)
Kitty Maynard (S)
Donald McColl (PL)
Kevin McKillop (S)
Kate Moncrief (AL)
Andrew Oros (S)
Jennifer Rowsell (PL)
Hui-Ju Tsai (Jr. Leave)
Peter Weigel (S)

Fall 2014

Benjamin Bellas (Jr. Leave)
Bridgit Bunten (Jr. Leave)
Elena Deanda (Jr. Leave)
Jennifer Hopper (Jr. Leave)
Robert Lynch (L)
Adi Mayer (PL)
Robert Mooney (S)
Aileen Tsui (S)
Christine Wade (S)

Spring 2015

Aaron Amick (PL)
Bridgit Bunten (Jr. Leave)
Richard Gillin (S)
Heather Harvey (Jr. Leave)
Robert Lynch (L)
Tia Murphy (Jr. Leave)
Jennifer Roswell (Jr. Leave)
Aileen Tsui (S)

Fall 2015

Bridget Bunten (PL)
James Lipchock (JL)
William Schindler (L)
Richard Striner (Med L)
Lisa Daniels (Med L)
Matt McCabe (S)

Spring 2016

James Hall (JL)
Clayton Black (S)
Michelle Volansky (S)

Fall 2016

Julie Markin (JL)
Tia Murphy (PL)
Elena Deanda (PL)
Ryan Kelty (L)
Ken Schweitzer (S)

Student-Faculty Ratios
Fall 2011 through Fall 2015

	Fall 2011	Fall 2012	Fall 2013	Fall 2014	Fall 2015
Full-time Students	1473	1469	1440	1417	1400
Part-time FTE	14.0	14.3	14.3	22.7	9.0
Total FTE Students	1487	1483	1454	1440	1409
	Fall 2011	Fall 2012	Fall 2013	Fall 2014	Fall 2015
FTE Part-time Faculty	23.3	26.7	27.3	25.0	23.7
Full-time Faculty	96	95	99	97	100
Total FTE Faculty	119.3	121.7	126.3	122.0	123.7
Full-time as % of total FTE	80.5%	78.1%	78.4%	79.5%	80.9%
	Fall 2011	Fall 2012	Fall 2013	Fall 2014	Fall 2015
Total FTE Students	1487.0	1483.3	1454.3	1439.7	1409.0
Total FTE Faculty	119.3	121.7	126.3	122.0	123.7
Student/Faculty Ratio	12.5	12.2	11.5	11.8	11.4

Note: Student figures include degree and non-degree seeking undergraduate students. The AAUP definition of full-time instructional faculty is used to calculate FTE faculty. Part-time FTE is calculated according to the Common Data Set where administrators such as the President, Provost, and librarians may be included if they teach one or more credit courses.

Source: Office of Institutional Research and Assessment

**Financial Aid Award Amounts by Type of Aid
(Est. 2015-16)**

	Need-based \$ (Include non-need-based aid used to meet need.)	Non-need-based \$ (Exclude non-need-based aid used to meet need.)
Scholarships/Grants		
Federal	\$1,194,744	\$0
State (i.e., all states, not only the state in which your institution is located)	\$1,194,995	\$0
Institutional: Endowed scholarships, annual gifts and tuition funded grants, awarded by the college, excluding athletic aid and tuition waivers (which are reported below).	\$18,259,516	\$7,429,371
Scholarships/grants from external sources (e.g., Kiwanis, National Merit) not awarded by the college	\$675,646	\$729,913
Total Scholarships/Grants	\$21,324,901	\$8,159,284
Self-Help		
Student loans from all sources (excluding parent loans)	\$3,337,166	\$5,046,107
Federal Work-Study	\$180,900	
State and other (e.g., institutional) work-study/employment (Note: Excludes Federal Work-Study captured above.)	\$0	\$0
Total Self-Help	\$3,518,066	\$5,046,107
Other		
Parent Loans	\$0	\$5,754,219
Tuition Waivers Reporting is optional. Report tuition waivers in this row if you choose to report them. Do not report tuition waivers	\$0	\$1,141,199
Athletic Awards	\$0	\$0

Source: Financial Aid Office (Common Data Set 2015-16)

**Number of First-time Freshmen and Full-time Undergraduates Receiving Financial Aid
(Estimated Fall 2015)**

	First-time Full-time Freshmen	Full-time Undergraduate (Incl. Fresh.)	Less Than Full-time Undergraduate
a) Number of degree-seeking undergraduate students (CDS Item B1 if reporting on Fall 2008 cohort)	391	1380	5
b) Number of students in line a who applied for need-based financial aid	308	946	1
c) Number of students in line b who were determined to have financial need	266	825	0
d) Number of students in line c who were awarded any financial aid	266	825	0
e) Number of students in line d who were awarded any need-based scholarship or grant aid	266	825	0
f) Number of students in line d who were awarded any need-based self-help aid	202	680	0
g) Number of students in line d who were awarded any non-need-based scholarship or grant aid	58	173	0
h) Number of students in line d whose need was fully met (<u>exclude PLUS loans, unsubsidized loans, and private alternative loans</u>)	74	263	0
i) On average, the percentage of need that was met of students who were awarded any need-based aid. Exclude any aid that was awarded in excess of need as well as any resources that were awarded to replace EFC (<u>PLUS loans, unsubsidized loans, and private alternative loans</u>)	91.0%	86.0%	0.0%
j) The average financial aid package of those in line d . Exclude any resources that were awarded to replace EFC (<u>PLUS loans, unsubsidized loans, and private alternative loans</u>)	\$ 35,290	\$ 31,250	\$ -
k) Average need-based scholarship and grant award of those in line e	\$ 29,630	\$ 27,166	\$ -
l) Average need-based self-help award (<u>excluding PLUS loans, unsubsidized loans, and private alternative loans</u>) of those in line f	\$ 3,837	\$ 4,723	\$ -
m) Average need-based loan (<u>excluding PLUS loans, unsubsidized loans, and private alternative loans</u>) of those in line f who were awarded a need-based loan	\$ 3,429	\$ 4,472	\$ -

Source: Financial Aid Office (Common Data Set: 2015-16)

**Number of First-time Freshmen and Full-time Undergraduates Receiving Financial Aid
(Estimated Fall 2015)**

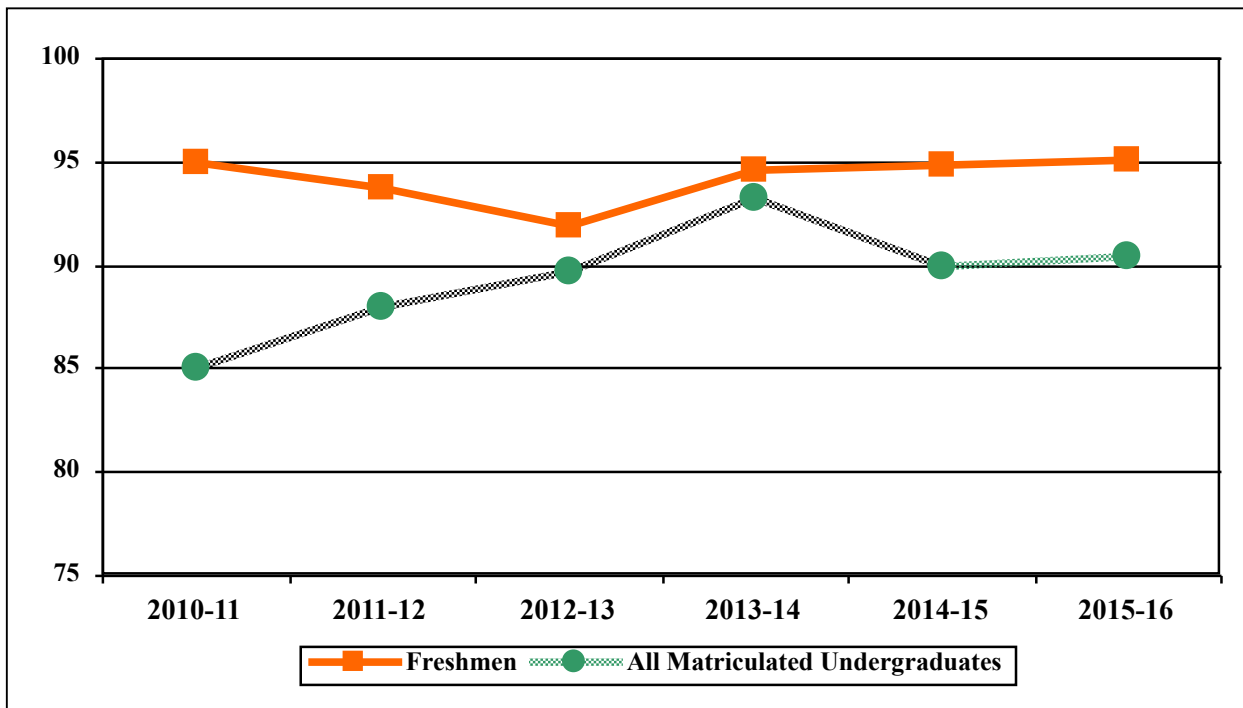
Enrolled Students Awarded Non-need-based Scholarships and Grants	First-time Full-time Freshmen	Full-time Undergrad (Incl. Fresh.)	Less Than Full-time Undergrad
n) Number of students in line a who had no financial need and who were awarded institutional non-need-based scholarship or grant aid (exclude those who were awarded athletic awards and tuition benefits)	106	440	0
o) Average dollar amount of institutional non-need-based scholarship and grant aid awarded to students in line n	\$ 17,710	\$ 16,766	\$ 0
p) Number of students in line a who were awarded an institutional non-need-based athletic scholarship or grant	0	0	0
q) Average dollar amount of institutional non-need-based athletic scholarships and grants awarded to students in line p	\$ 0	\$ 0	\$ 0

Source: Financial Aid Office (Common Data Set: 2015-16)

Financial Aid History 2010-11 to 2015-16

	Academic Year					
	2010-11	2011-12	2012-13	2013-14	2014-15	2015-16
Percentage of Freshman Class Receiving Aid	95.0%	93.7%	91.9%	94.6%	94.8%	95.1%
Percentage of Total Full-time Undergraduates Receiving Aid	85.0%	88.0%	89.7%	93.3%	90.0%	90.4%
Total Scholarship/Grant Awards	19,540,548	23,372,048	25,387,790	28,498,027	29,003,167	29,484,185
Total Self-Help	8,800,652	9,549,720	9,915,531	9,368,088	8,737,022	8,564,173
Total Financial Aid	28,341,200	32,921,768	35,303,321	37,866,115	37,740,189	38,048,358

Percentages of Freshmen and All Matriculated Undergraduates Receiving Any Financial Aid



Source: Financial Aid Office Common Data Sets: 2010-11 to 2015-16

Summary**Finance Survey Summary**

IPEDS collects important information regarding your institution. All data reported in IPEDS survey components become available in the IPEDS Data Center and appear as aggregated data in various Department of Education reports. Additionally, some of the reported data appears specifically for your institution through the College Navigator website and is included in your institution's Data Feedback Report (DFR). The purpose of this summary is to provide you an opportunity to view some of the data that, when accepted through the IPEDS quality control process, will appear on the College Navigator website and/or your DFR. College Navigator is updated approximately three months after the data collection period closes and Data Feedback Reports will be available through the [Data Center](#) and sent to your institution's CEO in November 2016.

Please review your data for accuracy. If you have questions about the data displayed below after reviewing the data reported on the survey screens, please contact the IPEDS Help Desk at: 1-877-225-2568 or ipedshelp@rti.org.

Core Revenues

Revenue Source	Reported values	Percent of total core revenues	Core revenues per FTE enrollment
Tuition and fees	\$34,471,457	58%	\$22,283
Government grants and contracts	\$2,677,914	5%	\$1,731
Private gifts, grants, and contracts	\$19,519,687	33%	\$12,618
Investment return	\$1,316,422	2%	\$851
Other core revenues	\$1,489,675	3%	\$963
Total core revenues	\$59,475,155	100%	\$38,445
Total revenues	\$74,832,489		\$48,373

Other core revenues include government appropriations (federal, state, and local), sales and services of educational activities; and other sources. Core revenues exclude revenues from auxiliary enterprises (e.g., bookstores, dormitories), hospitals, and independent operations. For institutions reporting in Full parent/child relationships, core revenues per FTE enrollment amounts will not be allocated to child institutions.

Core Expenses

Expense function	Reported values	Percent of total core expenses	Core expenses per FTE enrollment
Instruction	\$21,299,678	38%	\$13,768
Research	N/A	0%	\$0
Public service	N/A	0%	\$0
Academic support	\$4,018,047	7%	\$2,597
Institutional support	\$17,650,058	32%	\$11,409
Student services	\$11,913,539	21%	\$7,701
Other core expenses	\$1,010,059	2%	\$653
Total core expenses	\$55,891,381	100%	\$36,129
Total expenses	\$67,210,719		\$43,446

Other core expenses include net grant aid to students, net of discounts and allowances, and other expenses. Core expenses exclude expenses from auxiliary enterprises (e.g., bookstores, dormitories), hospitals, and independent operations. For institutions reporting in Full parent/child relationships, core expenses per FTE enrollment amounts will not be allocated to child institutions.

	Calculated value
FTE enrollment	1,547

**ALUMNI ANNUAL GIVING
2008-09 through 2014-15**

Year	Solicitable Base¹	Number of Donors to all funds²	%	Amount³ (\$)	Average Gift⁴ (\$)
2008-09	7,811	1,549	20%	877,320	566.38
2009-10	8,179	1,470	18%	1,296,911	882.25
2010-11 ⁵	8,267	1,597	19%	1,016,076	636.24
2011-12	8,409	1,509	18%	1,222,028	809.83
2012-13	8,555	1,479	17%	1,061,783	717.91
2013-14	8,672	1,445	17%	1,061,791	734.80
2014-15	8,907	1,509	17%	8,376,566	5,551.07

¹ Solicitable base is defined as undergraduate alumni who have a good address and are not coded "do not solicit".

² Using the "Alumni/Undergrad Degree:Donors#" variable as reported to the Voluntary Support of Education Survey (VSE).

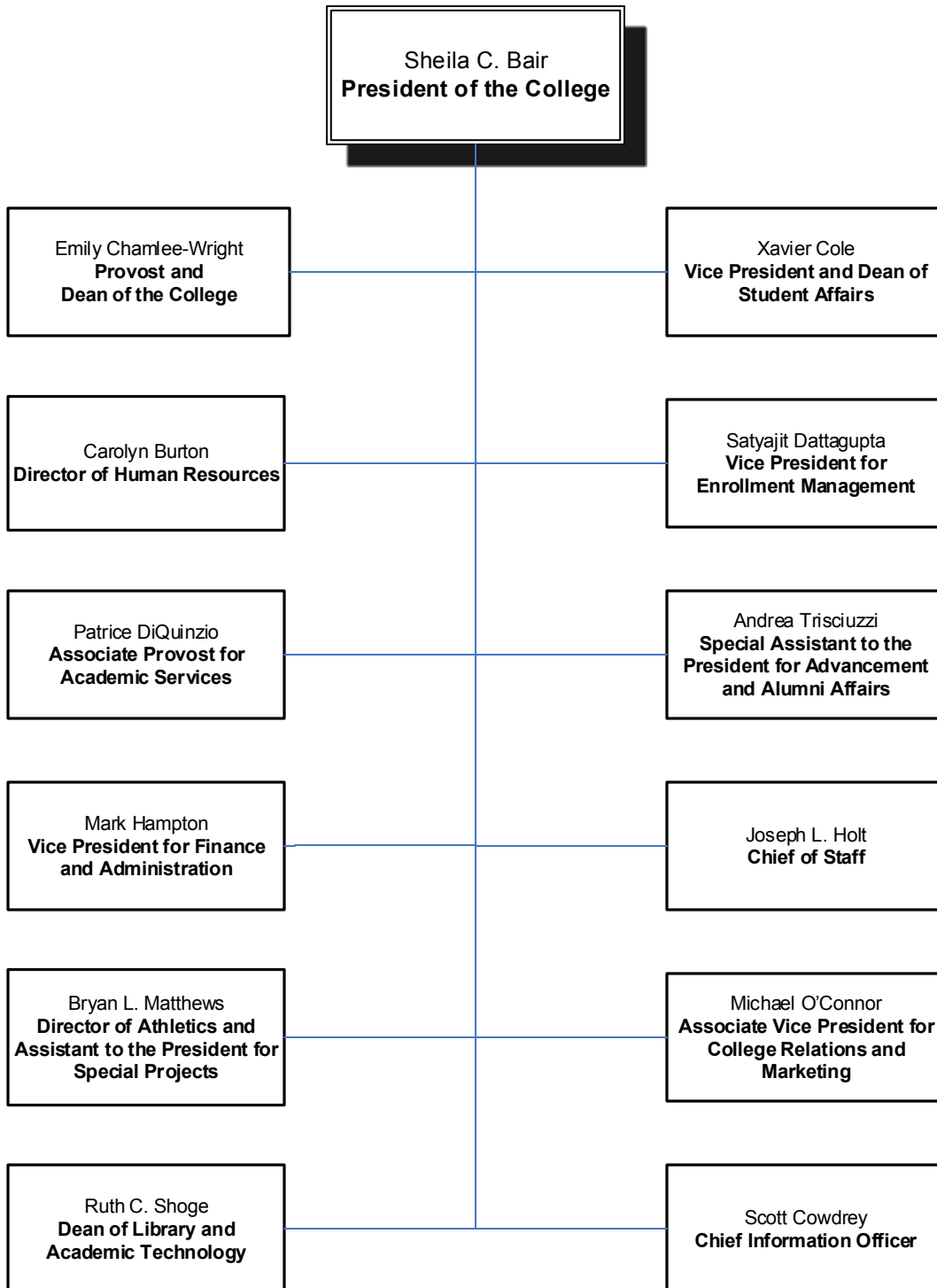
³ Using the "Alumni: Total (Using Face Value)" variable as reported to the Voluntary Support of Education Survey (VSE).

⁴ Past Years' Values for Average gift size have been recalculated based on new reporting procedures.

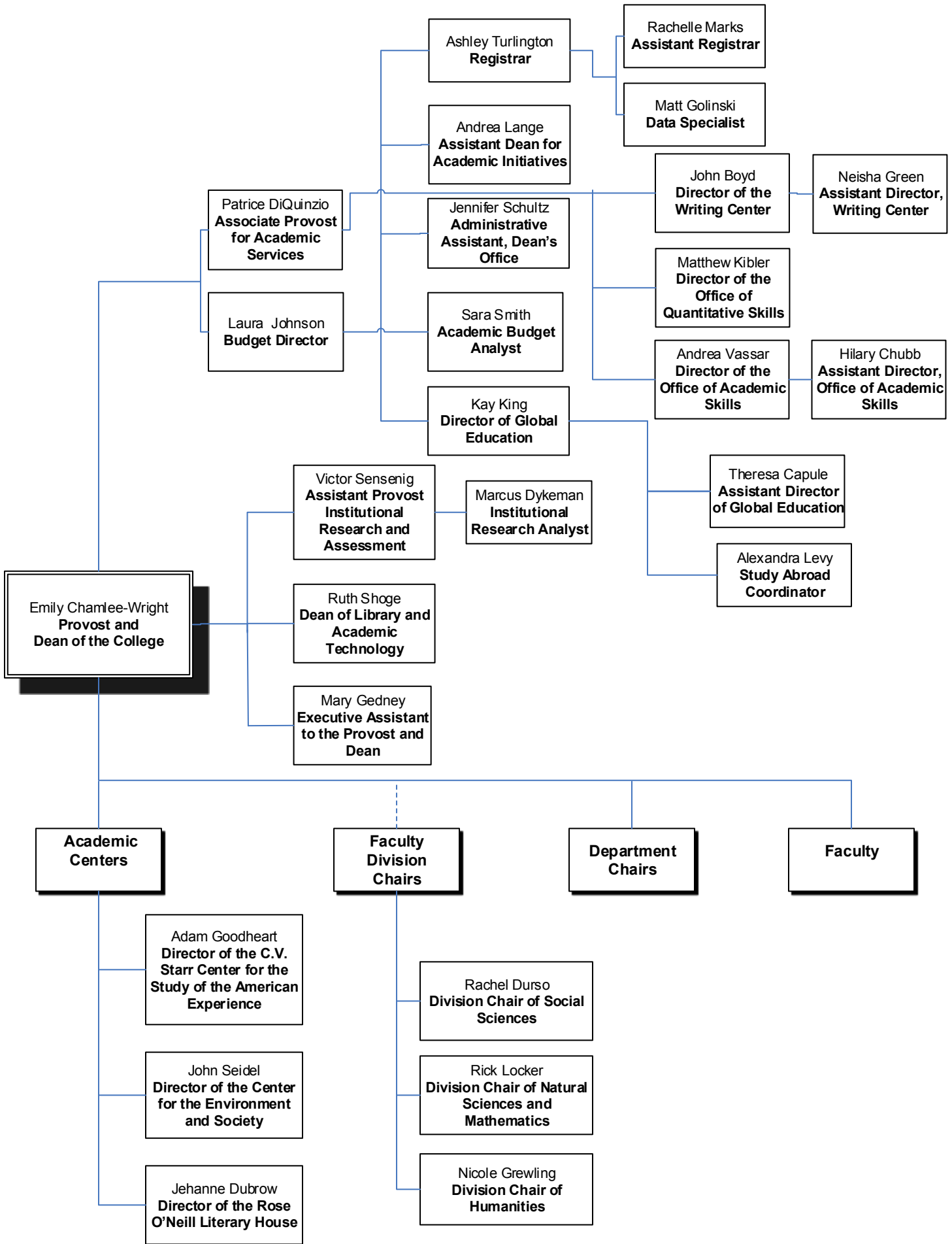
⁵ Beginning in FY11, the solicitable base is calculated to include active alumni only.

Source: College Advancement

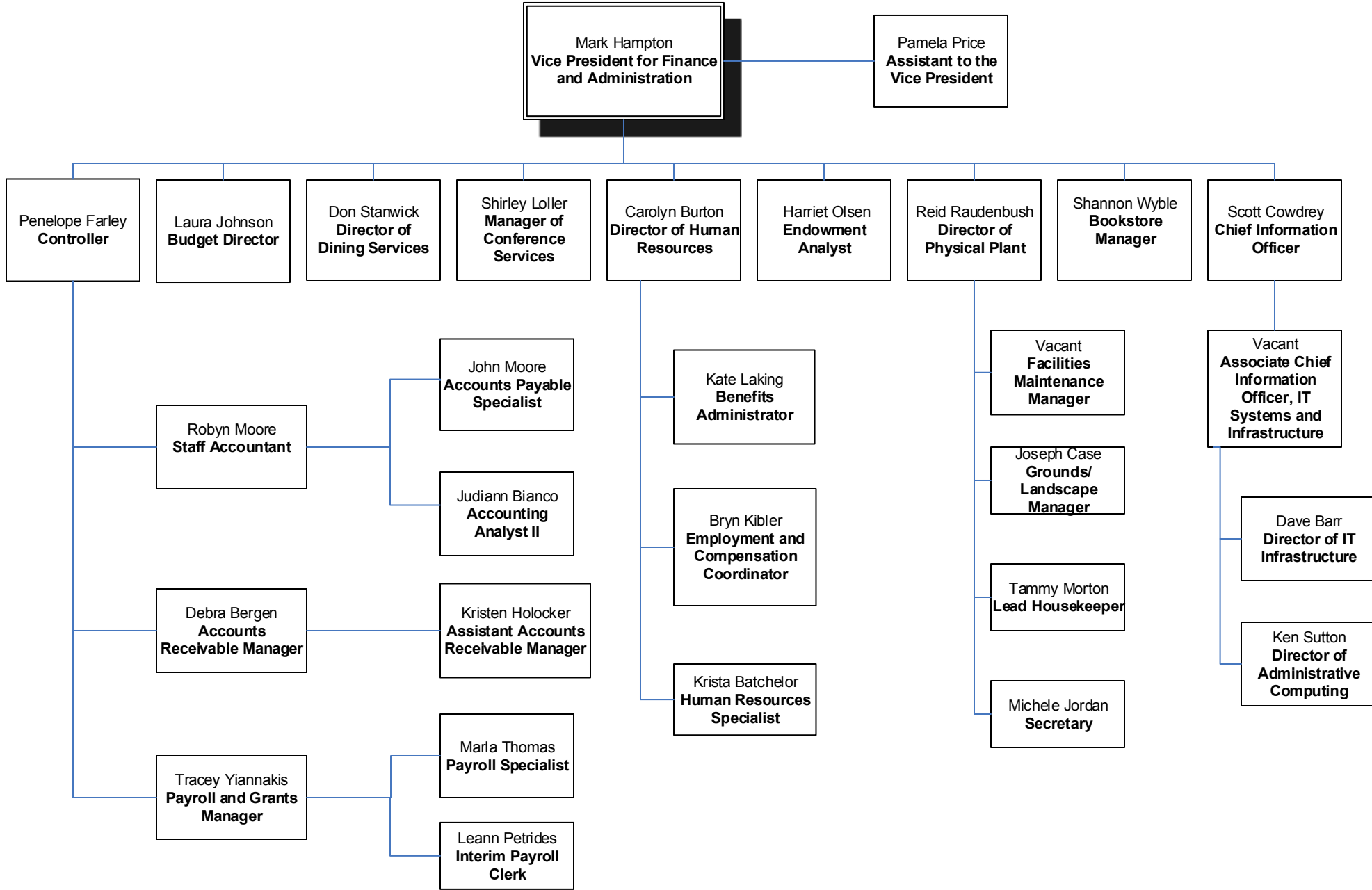
WASHINGTON COLLEGE SENIOR STAFF 2015



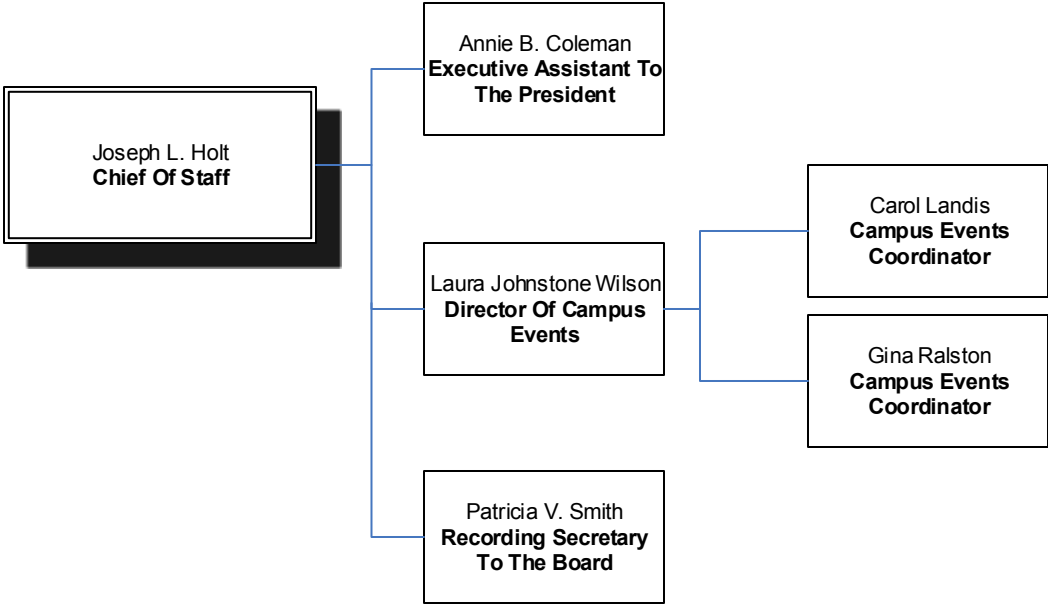
OFFICE OF THE PROVOST AND DEAN



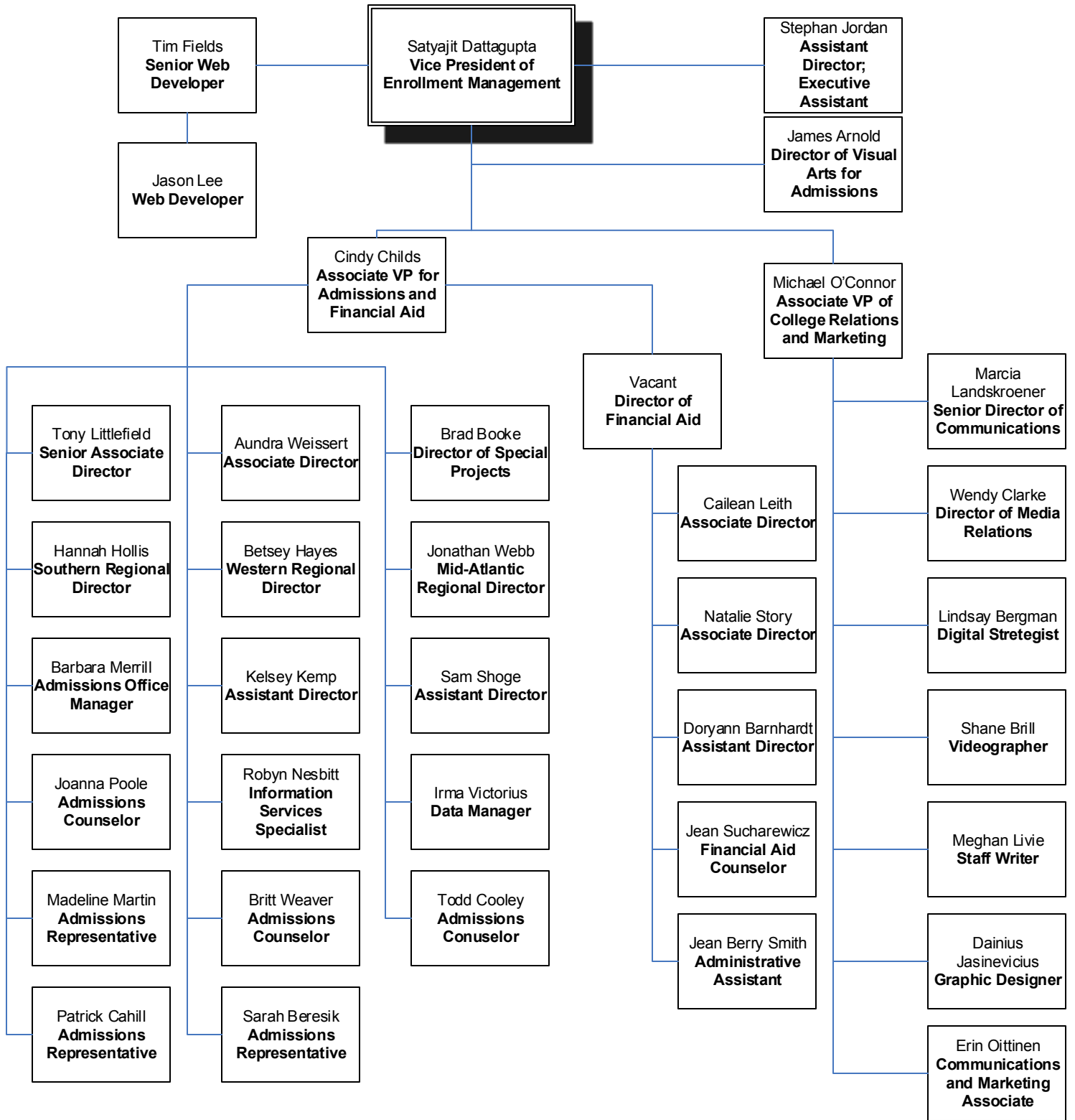
FINANCE



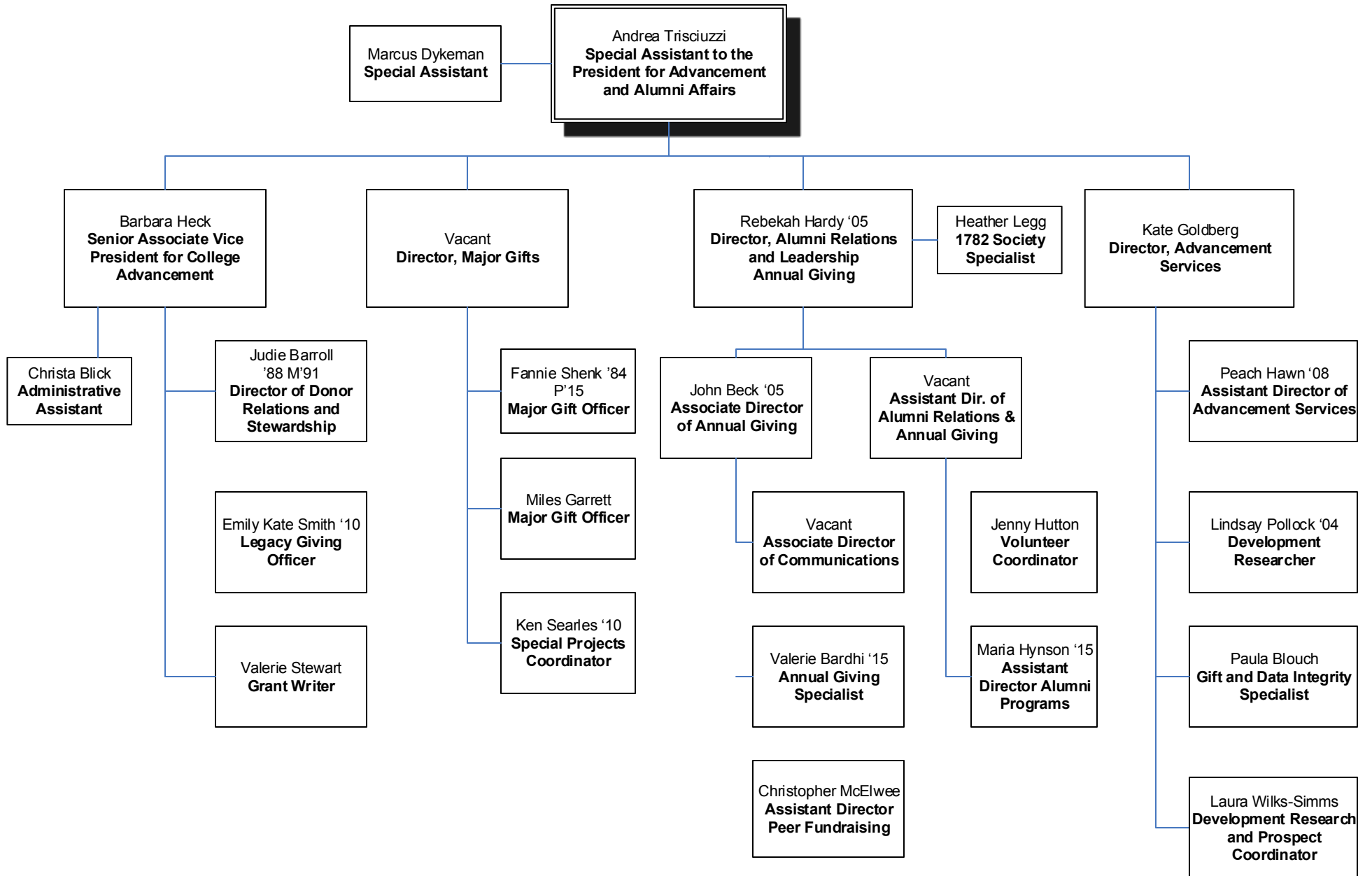
CHIEF OF STAFF



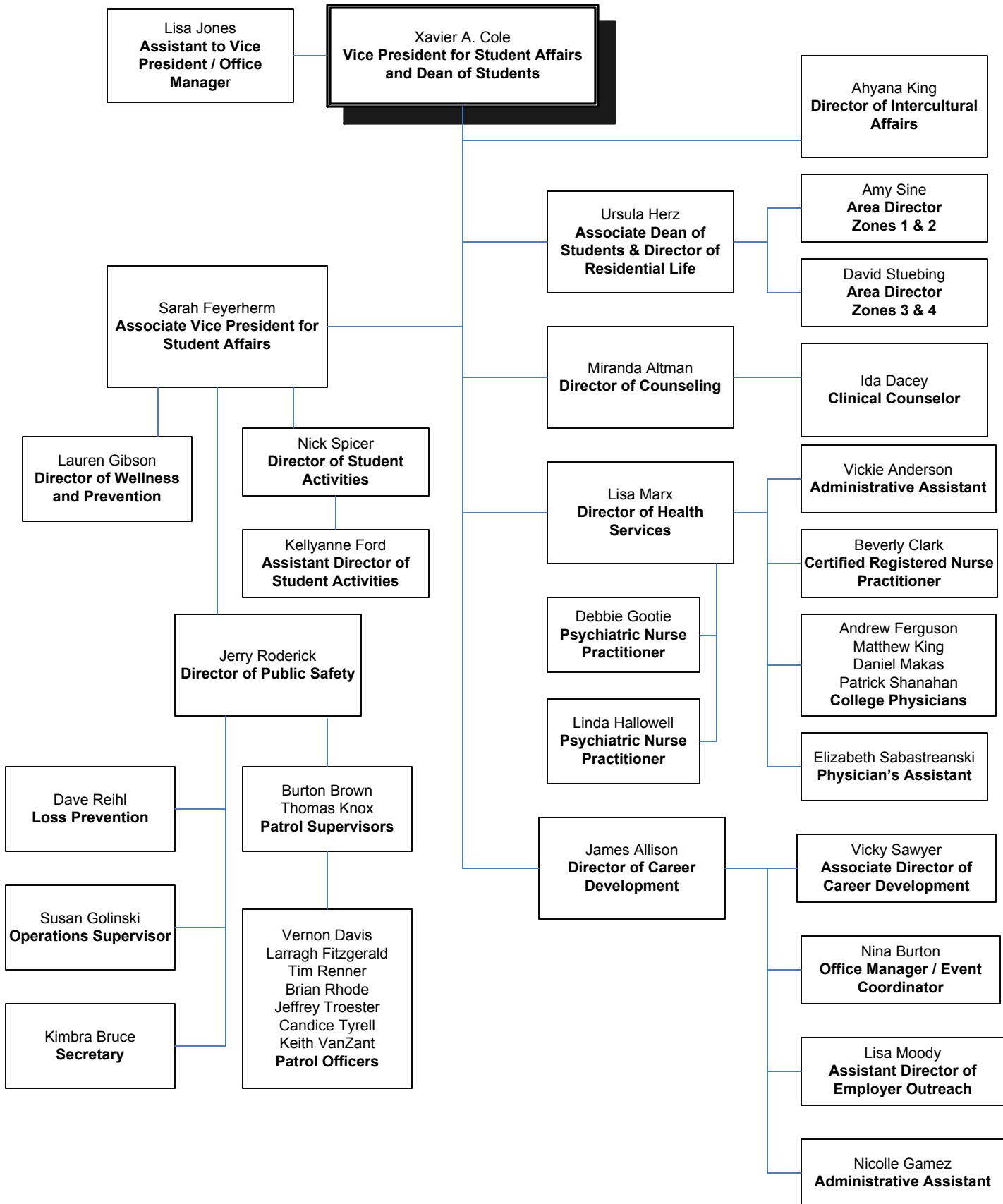
ENROLLMENT MANAGEMENT



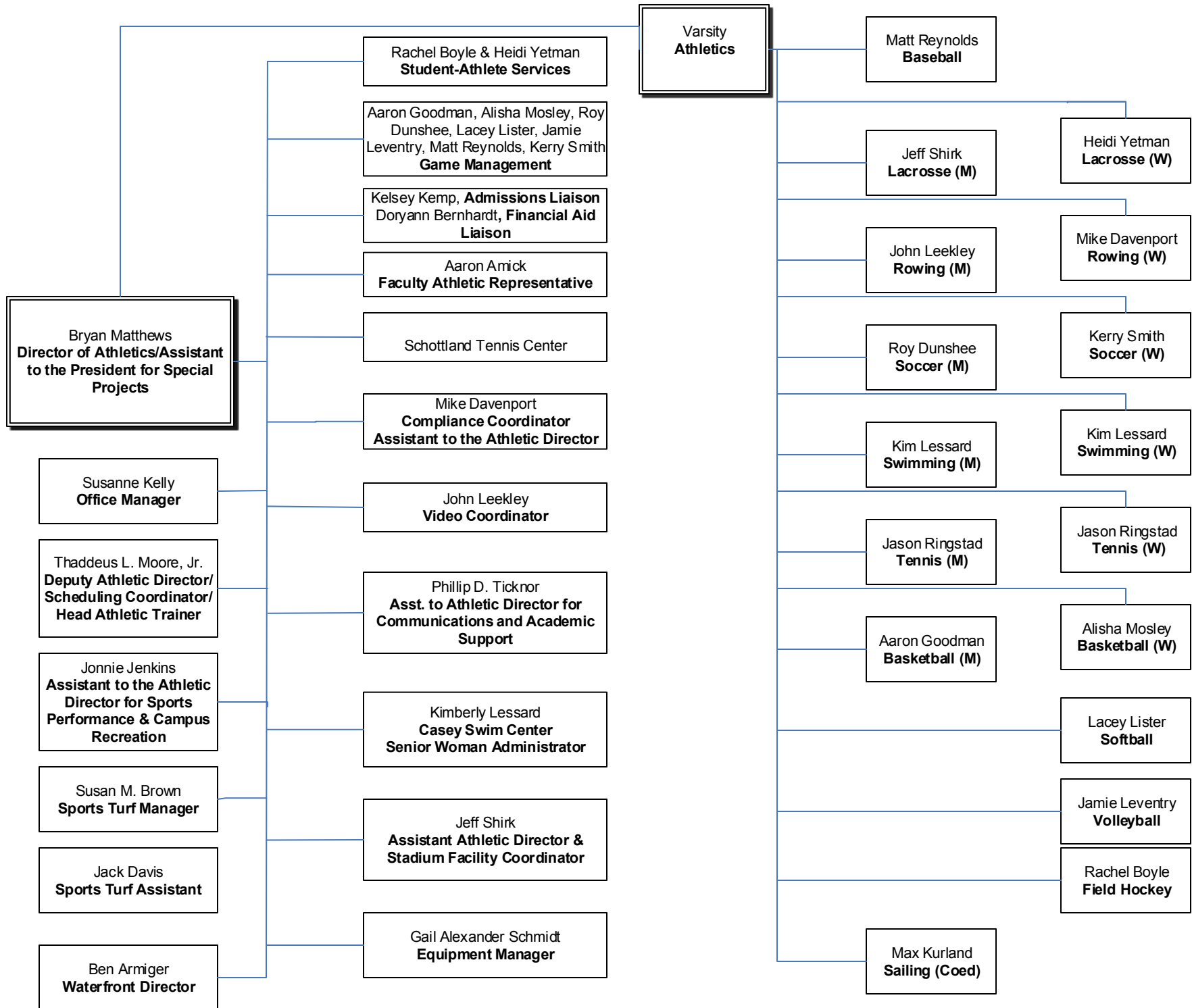
ADVANCEMENT



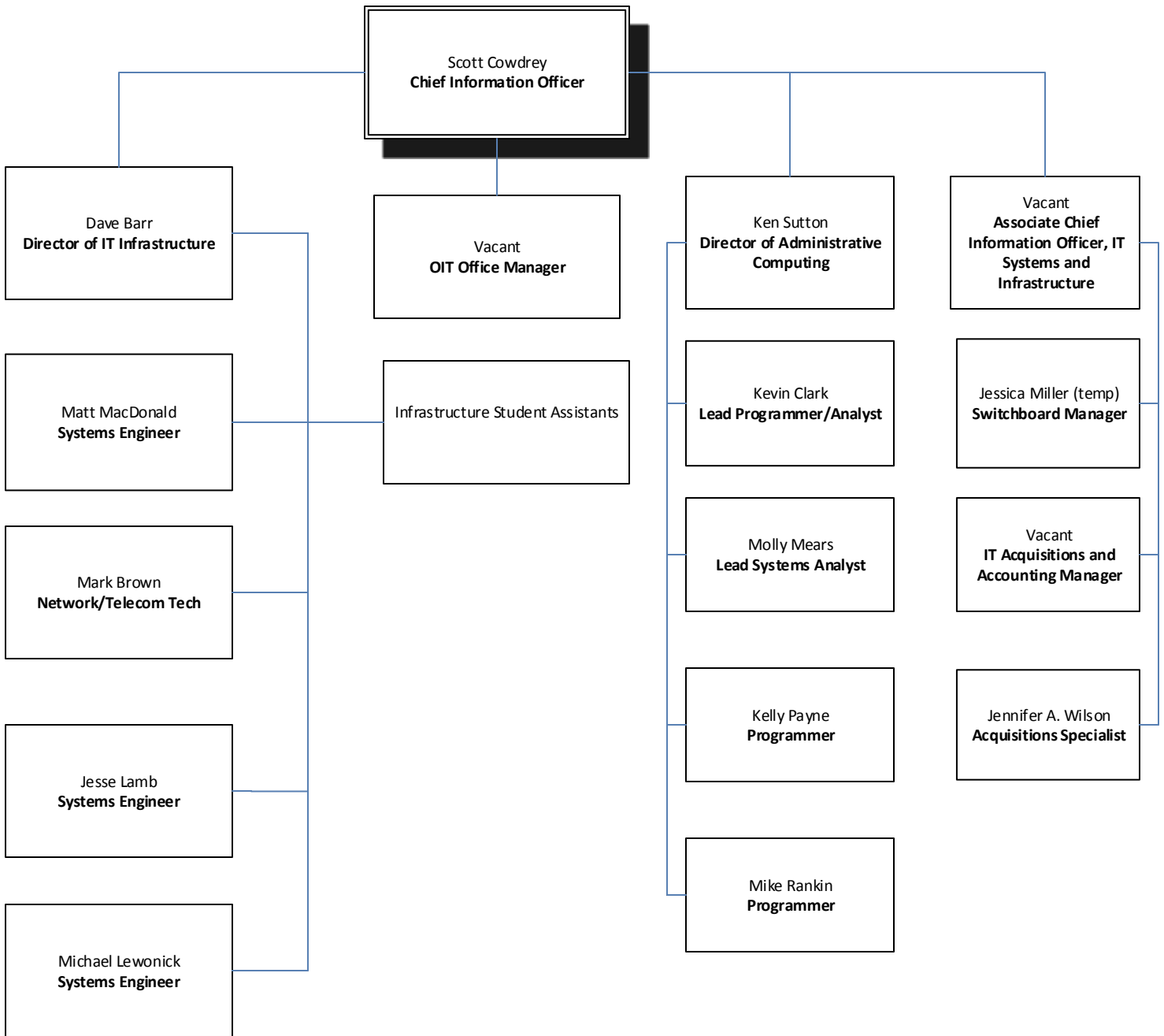
STUDENT AFFAIRS



ATHLETICS



INFORMATION TECHNOLOGY



LIBRARY AND ACADEMIC TECHNOLOGY

